

Online Appendix: Network Proximity and Business Practices in African Manufacturing

Marcel Fafchamps and Måns Söderbom

Document description: This appendix contains additional material for the study "Network Proximity and Business Practices in African Manufacturing" by Marcel Fafchamps and Måns Söderbom.

Table of Contents:

Section 1: Additional material: Covariance in profits and bootstrapped standard errors

Section 2: Names and definitions of variables used in the empirical analysis

Section 3: Maps of survey locations

Section 4: Dyadic regressions modeling firm performance and growth

Section 5: Additional regression results: Extensions and robustness checks

Section 1: Additional material: Covariance in profits and bootstrapped standard errors

1.1 Covariance in profits

It is possible to investigate payoffs directly, e.g., firm performance and growth. To illustrate, let us replace y_i in eq. (2.1) in the paper by its optimal value from (2.2) and let us use (2.3) to solve for y . We obtain:¹

$$\pi_i = \frac{1}{2}\alpha_i^2 + (\rho\alpha_i + \gamma)g_i(I - \rho G)^{-1}A + \frac{1}{2}\rho^2 (g_i(I - \rho G)^{-1}A)^2$$

If $\rho = 0$ this simplifies to:

$$\pi_i = \frac{1}{2}\alpha_i^2 + \gamma g_i A$$

Let $\bar{\pi} \equiv \pi - E[\pi] = \frac{1}{2}\tilde{\alpha}_i^2 + \gamma g_i \bar{A}$ where $\tilde{\alpha}_i^2 \equiv \alpha_i^2 - \text{Var}(\alpha) - E(\alpha)^2$. The covariance matrix of π is:

$$\begin{aligned} \text{Cov}(\bar{\pi}_i, \bar{\pi}_j | \rho = 0) &= E\left[\left(\frac{1}{2}\tilde{\alpha}_i^2 + \gamma g_i \bar{A}\right)\left(\frac{1}{2}\tilde{\alpha}_j^2 + \gamma g_j \bar{A}\right)'\right] \\ &= E\left[\frac{1}{4}\tilde{\alpha}_i^2 \tilde{\alpha}_j^2 + \frac{\gamma}{2}\tilde{\alpha}_i^2 g_j \bar{A} + \frac{\gamma}{2}\tilde{\alpha}_j^2 g_i \bar{A} + \gamma^2 g_i \bar{A} \bar{A}' g_j\right] \end{aligned}$$

which shows that if $\gamma \neq 0$, that is, if externalities are present, firm performance is correlated across connected firms.² If $\gamma < 0$, the correlation can be negative.² Positive externalities thus manifest themselves as proximate firms having similar performance while dissimilar performance is associated with negative externalities. This equation also shows that, even in the absence of externalities, firm performance may be similar because of correlation in firm-specific conditions α_i and α_j – the so-called contextual effects. It is the potential presence of these contextual effects that precludes the interpretation of correlated firm performance as evidence of externalities. When strategic complements or substitutes are present, the expression for the covariance of π becomes more complicated but the intuition remains similar: profits may be correlated, positively or negatively, across proximate firms.

1

$$\begin{aligned} \pi_i &= \alpha_i(\alpha_i + \rho g_i y) + \gamma g_i y + \rho(\alpha_i + \rho g_i y)g_i y - \frac{1}{2}(\alpha_i + \rho g_i y)^2 \\ &= \frac{1}{2}\alpha_i^2 + (\rho\alpha_i + \gamma)g_i y + \frac{1}{2}\rho^2 (g_i y)^2 \end{aligned}$$

¹Even if $E[\tilde{\alpha}_i \tilde{\alpha}_j] = 0$, the $E[\tilde{\alpha}_i^2 g_j \bar{A}]$ terms do not vanish whenever α_i appears in $g_j A$, that is, whenever i is a neighbor of j .

²For instance, if α_i and α_j are independent and $g_i \bar{A} = \tilde{\alpha}_j$ and $g_j \bar{A} = \tilde{\alpha}_i$ (i and j are mutual neighbors) then $\text{Cov}(\bar{\pi}_i, \bar{\pi}_j | \rho = 0) = \gamma E[\tilde{\alpha}_i^2 \tilde{\alpha}_i]$, which is negative iff $\gamma < 0$.

1.2 Bootstrapped standard errors

Dyadic observations are typically not independent since residual u_{ij} is likely to be correlated with u_{ik} . This complicates the computation of standard errors. In particular, robust standard errors must correct for cross-observation correlation in the error terms involving the same enterprises. To obtain consistent standard errors, we use bootstrapping, implemented as follows:

- (i) Draw a random sample s of n firms from the firm-level dataset with replacement;
- (ii) For this artificial sample of n firms, construct the corresponding $n(n-1)$ dyadic dependent and independent variables;
- (iii) Estimate the regression for this sample and store the resulting parameter estimates;
- (iv) After repeating the process (i)-(iii) J times, use the standard deviations of the estimated parameters as estimates of the standard errors.

Section 2: Names and definitions of variables used in the empirical analysis

Variable names for dependent variables*

Variable name	Description	Code
newprod	Did you introduce a new product last year?	0 = no, 1 = yes
invdum	Did you invest in plant or machinery last year?	0 = no, 1 = yes
anyrd	Does the firm do any research and development?	0 = no, 1 = yes
it	IT usage	0 = nothing, 1=email, 2=website
pcf_tech	First common factor for previous four variables	
suprat	Ratio of non-production workers to total employment	Percentage; see note (b)
htrain	Any in-house training of staff last year?	0 = no, 1 = yes
ftrain	Staff sent to formal training course last year?	0 = no, 1 = yes
pcf_hk	First common factor for previous three variables	
directimport	Any direct imports of inputs?	0 = no, 1 = yes
sellcredit	Do you sell on credit?	0 = no, 1 = yes
subcont	Does firm sub-contract production?	0 = no, 1 = yes
pcf_cont	First common factor for previous three variables	
reput_D1	If you have a dispute with a customer, will other customers find out?	0 = no, 1 = maybe, 2 = yes
reputD_2	If another firm has a dispute with a customer, will you refuse to deal with that customer?	0 = no, 1 = maybe, 2 = yes
reputD_3	If you have a dispute with a dispute, will other firms refuse to deal with that customer?	0 = no, 1 = maybe, 2 = yes
reputD_4	If you have a dispute with a supplier, will other suppliers find out?	0 = no, 1 = maybe, 2 = yes
reputD_5	If you have a dispute with a supplier, will other firms refuse to deal with that supplier?	0 = no, 1 = maybe, 2 = yes
pcf_repD	First common factor for previous five variables	
lvademp	Log(value-added per employee)	Log USD
dlemp	Employment growth last 3 years	Dlog
growth1	Revenue growth last year	Dlog
growth3	Revenue growth last 3 years	Dlog
pcf_perf	First common factor for previous four variables	
web	Does the firm use the web?	0 = no, 1 = yes
email	Does the firm use email?	0 = no, 1 = yes
reput_1	If you have a dispute with a customer, will other customers find out?	0 = no, 1 = yes
reput_2	If another firm has a dispute with a customer, will you refuse to deal with that customer?	0 = no, 1 = yes
reput_3	If you have a dispute with a dispute, will other firms refuse to deal with that customer?	0 = no, 1 = yes
reput_4	If you have a dispute with a supplier, will other suppliers find out?	0 = no, 1 = yes
reput_5	If you have a dispute with a supplier, will other firms refuse to deal with that supplier?	0 = no, 1 = yes
pcf_rep	First common factor for previous five variables	

* Note: In all regressions these variables are defined as absolute differences across any two firms.

Variable names and definitions for explanatory variables

supbuy	i & j trade with each other
samesup	i & j have a common supplier
samecus	i & j have a common client
same_sec	i & j are in the same sector
ldist	log distance between i & j
ad_fmage	Absolute difference firm age
ad_meduc	Absolute difference managers' education
ad_mexper	Absolute difference managers' experience
ad_mfemale	Absolute difference managers' genders
ad_lem	Absolute difference log employment
anylink	Dummy = 1 if supbuy=1, samesup=1 or samecus=1
secdist	Interaction: same_sec x ldist
seclink	Interaction: same_sec x anylink
sizdist	Interaction: similar size x ldist
sizlink	Interaction: similar size x anylink
sametown	Dummy = 1 if i and j located in same town

Section 3: Maps of Survey Locations

Figure S.3.1. Survey locations in Ethiopia

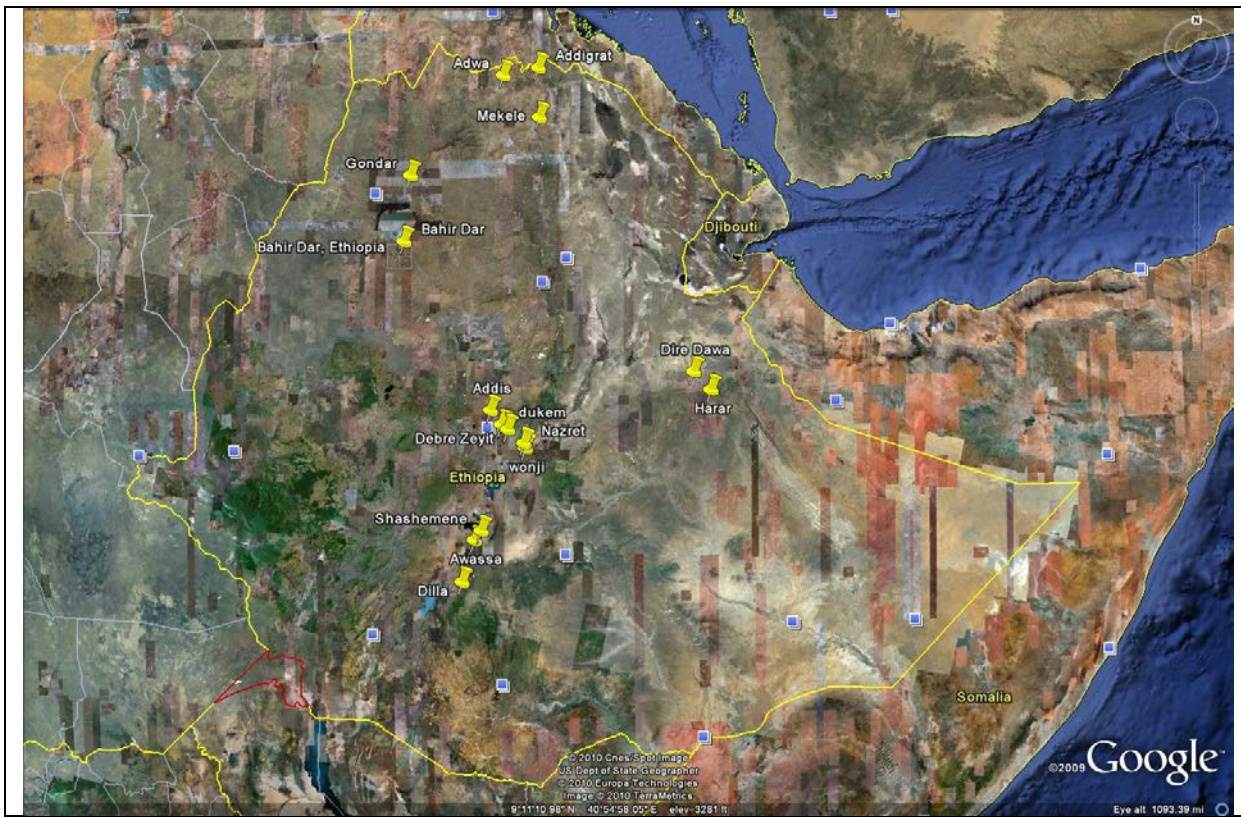
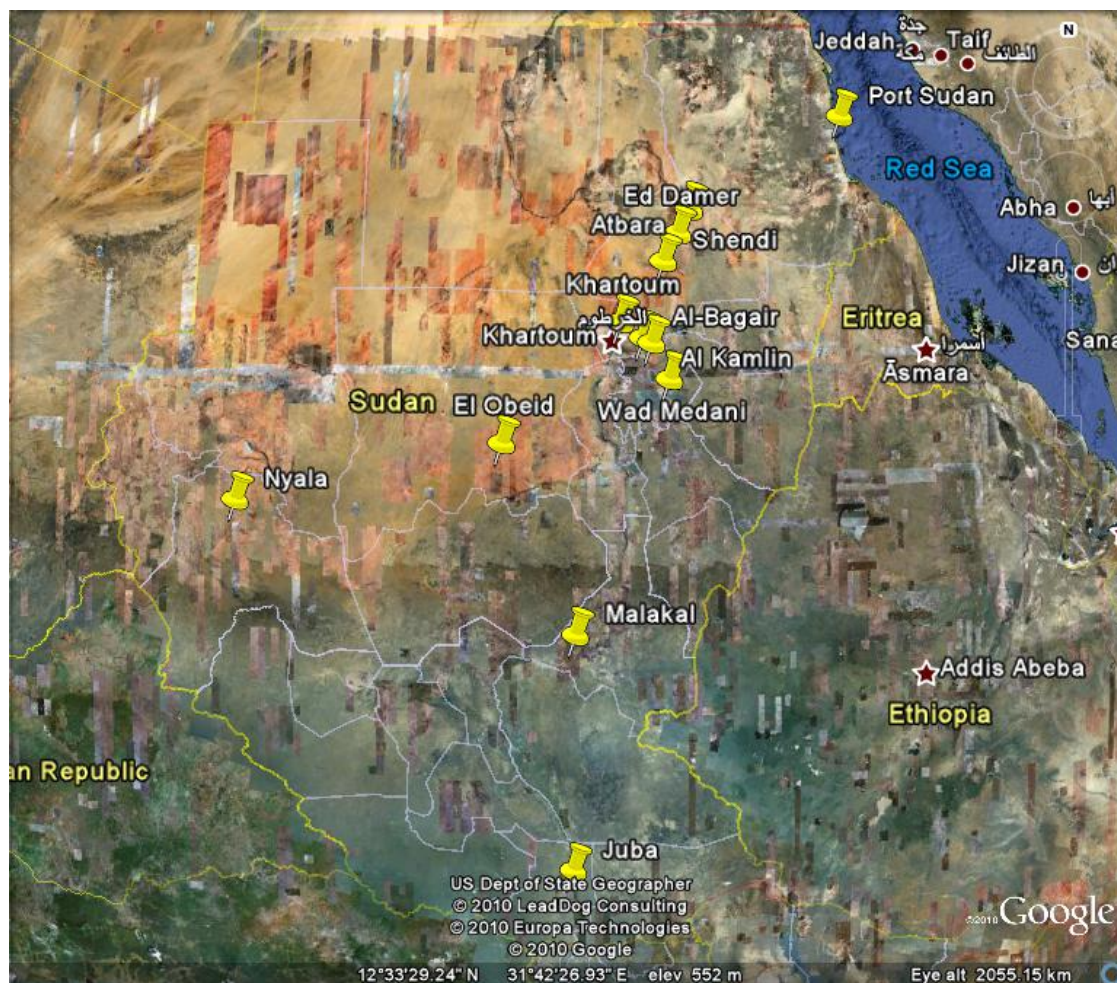


Figure S.3.2. Survey locations in Sudan



Section 4: Dyadic regressions modeling firm performance and growth

	Ethiopia					Sudan				
	[1]	[2]	[3]	[4]	[5]	[6]	[7]	[8]	[9]	[10]
	Log(value-added per employee) $ y_i - y_j $	Labor growth last 3 years $ y_i - y_j $	Revenue growth last year $ y_i - y_j $	Revenue growth last 3 years $ y_i - y_j $	First common factor $ y_i - y_j $	Log(value-added per employee) $ y_i - y_j $	Labor growth last 3 years $ y_i - y_j $	Revenue growth last year $ y_i - y_j $	Revenue growth last 3 years $ y_i - y_j $	First common factor $ y_i - y_j $
i & j trade with each other	-0.0758 (0.284)	-0.0850 (0.130)	-0.0437 (0.121)	0.338 (0.657)	0.165 (0.424)		-0.534** (0.221)	-0.413 (0.676)	1.652 (2.483)	
i & j have common supplier	-0.106 (0.111)	0.0152 (0.0668)	0.246** (0.113)	0.00522 (0.129)	0.109 (0.142)	-1.651*** (0.453)	-0.277** (0.122)	-0.904*** (0.337)	-0.711** (0.350)	-0.480** (0.203)
i & j have common client	-0.182 (0.136)	-0.0136 (0.0929)	0.195 (0.151)	-0.0119 (0.202)	0.113 (0.195)	-0.986 (0.660)	0.0900 (0.139)	-0.586*** (0.203)	0.307 (0.443)	-0.00893 (0.216)
log Distance btw i & j	-0.0247** (0.0122)	0.0139 (0.0106)	0.0179* (0.0108)	0.0193 (0.0168)	0.0235 (0.0149)	-0.0612 (0.0386)	-0.0173 (0.0111)	-0.0515** (0.0240)	-0.0515 (0.0346)	-0.0103 (0.0187)
i & j belong to same sector	-0.0819* (0.0447)	0.00508 (0.0247)	-0.00350 (0.0185)	-0.0243 (0.0515)	-0.0130 (0.0349)	-0.135 (0.156)	-0.0555 (0.0394)	-0.0465 (0.0680)	-0.0624 (0.133)	-0.0756 (0.0869)
Abs diff firm age	-0.00314 (0.00200)	0.00267 (0.00347)	-0.00260*** (0.000730)	-0.00564*** (0.00161)	-0.00397*** (0.00146)	-0.00493 (0.00781)	0.00112 (0.00216)	0.00862 (0.00651)	0.00458 (0.00746)	0.00602 (0.00459)
Abs diff managers' education	-0.00722 (0.0280)	0.00380 (0.0117)	-0.00917 (0.0116)	0.00885 (0.0310)	-0.0164 (0.0174)	0.0460 (0.0472)	-0.00466 (0.0116)	-0.0333 (0.0228)	-0.0201 (0.0268)	0.0114 (0.0251)
Abs diff managers' experience	0.000671 (0.00321)	7.15e-06 (0.00226)	-0.00272 (0.00204)	-0.00171 (0.00453)	-0.00410 (0.00284)	-0.00732 (0.00578)	0.000766 (0.00132)	0.00303 (0.00695)	-0.00385 (0.00580)	-0.00186 (0.00313)
Owners' gender differ	0.121 (0.0932)	0.103 (0.0669)	-0.0813** (0.0389)	-0.220*** (0.0686)	-0.110* (0.0582)	0.375 (0.582)	-0.00723 (0.0614)	-0.161 (0.134)	0.0558 (0.275)	-0.138 (0.0960)
Abs diff log employment	0.0786** (0.0311)	0.00792 (0.0242)	-0.0257** (0.0117)	-0.0375 (0.0360)	-0.0235 (0.0223)	0.00718 (0.110)	0.0654** (0.0258)	0.0906 (0.0709)	0.102 (0.114)	0.0611 (0.0600)

Note: The table shows OLS results. A constant is included in all specifications. The numbers in () are bootstrapped standard errors that are robust to heteroskedasticity and cross-observation correlation in the error terms involving the same firms. Statistical significance at the 10%, 5% and 1% level is indicated by *, ** and ***, respectively.

SECTION 5

Additional regression results: Extensions and robustness checks

The regression tables in this Section of the online appendix shows OLS results. In these tables, the numbers in () are bootstrapped standard errors that are robust to heteroskedasticity and cross-observation correlation in the error terms involving the same firms. Statistical significance at the 10%, 5% and 1% level is indicated by *,** and ***, respectively.

Tables and Specifications:

Part I: Results for Ethiopia

Table S1.E: Results for specifications with dummy variables for web, email and perceived consequences of disputes

Table S2.E: Results for the baseline specification with interaction terms (same sector x network variables) added

Table S3.E: Results for the baseline specification with interaction terms (similar firm size x network variables) added

Table S4.E: Results for the baseline specification with a dummy variable for location in the same town added.

Table S5.E: Results for an alternative specification in which a single dummy variable for connectedness (*anylink*) replaces the three trading relationship dummies in the baseline specification

Table S6.E: Results for the baseline specification with the geographical distance variable omitted

Part II: Results for Sudan

Table S1.S: Results for specifications with dummy variables for web, email and perceived consequences of disputes

Table S2.S: Results for the baseline specification with interaction terms (same sector x network variables) added

Table S3.S: Results for the baseline specification with interaction terms (similar firm size x network variables) added

Table S4.S: Results for the baseline specification with a dummy variable for location in the same town added.

Table S5.S: Results for an alternative specification in which a single dummy variable for connectedness (*anylink*) replaces the three trading relationship dummies in the baseline specification

Table S6.S: Results for the baseline specification with the geographical distance variable omitted

Part I: Results for Ethiopia

Table S1.E: Results for specifications with dummy variables for web, email and perceived consequences of disputes

VARIABLES	(1) Web	(2) email	(3) reput_D1	(4) reputD_2	(5) reputD_3	(6) reputD_4	(7) reputD_5	(8) pcf_repD
supbuy	0.0550 (0.113)	-0.125 (0.118)	-0.0650 (0.121)	0.00583 (0.0965)	-0.0266 (0.0935)	0.0706 (0.130)	-0.0304 (0.0832)	-0.107 (0.180)
samesup	-0.0689* (0.0392)	0.00586 (0.0524)	-0.0190 (0.0484)	0.0244 (0.0464)	-0.0518 (0.0434)	-0.0270 (0.0486)	-0.0229 (0.0447)	-0.0649 (0.101)
samecus	0.123* (0.0676)	-0.0631 (0.0733)	0.0385 (0.0403)	0.00236 (0.0684)	-0.0690 (0.0560)	0.000110 (0.0499)	0.0355 (0.0741)	0.0340 (0.147)
same_sec	-0.0402* (0.0205)	-0.0165 (0.0146)	-0.00501 (0.0141)	-0.00482 (0.0122)	0.00721 (0.0103)	-0.00622 (0.0131)	0.00769 (0.00907)	-0.000615 (0.0247)
ldist	-0.0251*** (0.00299)	0.00777 (0.00656)	0.00192 (0.00201)	-0.0107*** (0.00316)	-0.0100** (0.00469)	-0.000809 (0.00224)	-0.0157*** (0.00432)	-0.0310*** (0.00890)
ad_fmage	-0.000781 (0.00110)	-0.00109** (0.000534)	-6.10e-05 (0.000213)	-0.000841 (0.000912)	-0.00204*** (0.000638)	0.000619 (0.000539)	-0.000481 (0.000841)	-0.00268 (0.00177)
ad_meduc	-0.00391 (0.0138)	0.0684*** (0.0200)	-0.00364 (0.00223)	-0.00498 (0.00639)	-0.0127* (0.00771)	-0.000439 (0.00543)	-0.00838 (0.00636)	-0.0173 (0.0139)
ad_mexper	-0.000455 (0.00122)	-0.000425 (0.000638)	-0.000157 (0.000390)	-0.000943 (0.00160)	0.00174 (0.00177)	0.000806 (0.00114)	0.00176 (0.00209)	0.00239 (0.00426)
ad_mfemale	0.0465 (0.0332)	0.0439** (0.0202)	-0.00101 (0.00737)	0.00926 (0.0316)	0.0263 (0.0361)	0.00943 (0.0183)	0.0201 (0.0357)	0.0209 (0.0729)
ad_lemp	0.0766*** (0.0194)	0.113*** (0.0150)	0.00243 (0.00408)	-0.00226 (0.00951)	0.00724 (0.0103)	0.00813 (0.00889)	0.00801 (0.0114)	0.0109 (0.0214)
Constant	0.265*** (0.0404)	0.167*** (0.0420)	0.497*** (0.0133)	0.407*** (0.0401)	0.283*** (0.0425)	0.446*** (0.0281)	0.246*** (0.0431)	1.135*** (0.0996)

Standard errors in parentheses. *** p<0.01, ** p<0.05, * p<0.1

Table S2.E: Results for the baseline specification with interaction terms (same sector x network variables) added

VARIABLES	(1)	(2)	(3)	(4)	(5)	(6)	(7)	(8)
	newprod	invdum	anyrd	it	pcf_tech	suprat	htrain	ftrain
supbuy	0.0249 (0.136)	-0.0687 (0.129)	0.0572 (0.114)	-0.0735 (0.199)	0.0295 (0.252)	-0.0283 (0.0368)	0.0631 (0.117)	-0.100 (0.138)
samesup	-0.0493 (0.0666)	-0.0307 (0.0773)	-0.00481 (0.0563)	-0.0674 (0.0957)	-0.0857 (0.115)	0.00506 (0.0201)	0.0207 (0.0654)	-0.0602 (0.0671)
samecus	0.0460 (0.0666)	-0.0417 (0.0769)	-0.0198 (0.0739)	0.0581 (0.106)	-0.105 (0.108)	0.0109 (0.0233)	0.0253 (0.0807)	0.0795 (0.0725)
same_sec	-0.0452* (0.0273)	-0.0402 (0.0297)	-0.0229 (0.0212)	-0.0522 (0.0340)	-0.109** (0.0490)	-0.00294 (0.00822)	-0.0198 (0.0154)	-0.0690** (0.0291)
ldist	-0.00553* (0.00288)	-0.000262 (0.00201)	-0.0104* (0.00563)	-0.0170** (0.00698)	-0.0158* (0.00926)	-0.00195 (0.00157)	-0.0169*** (0.00309)	-0.0176*** (0.00274)
ad_fmage	-0.000611 (0.000574)	-0.000780*** (0.000272)	-0.001000 (0.00105)	-0.00187 (0.00131)	-0.00322* (0.00173)	-0.000149 (0.000335)	-0.000206 (0.000720)	0.00180 (0.00114)
ad_meduc	0.00864 (0.00906)	0.0141 (0.00955)	-0.00997 (0.00833)	0.0644** (0.0286)	0.0475** (0.0226)	-0.00392* (0.00237)	0.0112 (0.0184)	0.00648 (0.0160)
ad_mexper	-0.000761 (0.000896)	0.000113 (0.000386)	-0.000573 (0.00132)	-0.000880 (0.00151)	-0.00312* (0.00169)	0.000214 (0.000478)	-0.00167** (0.000802)	-0.000962 (0.000839)
ad_mfemale	-0.00138 (0.0185)	0.000628 (0.00597)	-0.00547 (0.0285)	0.0904** (0.0455)	0.00925 (0.0482)	0.00769 (0.0111)	0.0182 (0.0258)	-0.0118 (0.0178)
ad_lemp	0.00630 (0.00943)	0.0218** (0.00903)	0.0304** (0.0137)	0.189*** (0.0264)	0.121*** (0.0298)	0.0110** (0.00490)	0.0876*** (0.0155)	0.0989*** (0.0143)
secdist	0.00270 (0.00473)	-0.00365 (0.00472)	1.18e-05 (0.00335)	-0.00101 (0.00484)	0.00150 (0.00723)	6.95e-05 (0.00140)	0.000434 (0.00291)	0.00819** (0.00403)
seclink	0.0459 (0.0721)	0.0349 (0.0839)	0.0684 (0.0560)	0.00469 (0.116)	0.0899 (0.128)	0.0116 (0.0185)	0.0317 (0.0767)	0.106 (0.0700)
Constant	0.486*** (0.0190)	0.471*** (0.0220)	0.264*** (0.0424)	0.430*** (0.0594)	1.007*** (0.0721)	0.172*** (0.0135)	0.323*** (0.0362)	0.285*** (0.0363)

Standard errors in parentheses
 *** p<0.01, ** p<0.05, * p<0.1

Table S2.E continued

VARIABLES	(9)	(10)	(11)	(12)	(13)	(14)	(15)	(16)
	pcf_hk	directimport	sellcredit	subcont	pcf_cont	reput_1	reput_2	reput_3
supbuy	-0.152 (0.237)	0.0491 (0.124)	0.0313 (0.107)	0.0767 (0.116)	0.110 (0.258)	-0.0726 (0.209)	0.0131 (0.207)	-0.0891 (0.173)
samesup	-0.0459 (0.115)	0.0147 (0.0556)	0.0554 (0.0588)	0.0322 (0.0594)	-0.121 (0.122)	0.137 (0.131)	0.00529 (0.114)	-0.113 (0.0867)
samecus	0.132 (0.131)	0.102 (0.0628)	0.0231 (0.0566)	0.0498 (0.0726)	0.179 (0.145)	0.137 (0.0989)	0.0147 (0.139)	-0.0886 (0.102)
same_sec	-0.0846** (0.0362)	-0.0578* (0.0297)	0.00718 (0.0134)	-0.00606 (0.0173)	-0.0531 (0.0415)	-0.0331 (0.0473)	-0.00254 (0.0363)	0.0149 (0.0311)
ldist	-0.0272*** (0.00821)	-0.0134** (0.00593)	0.00116 (0.00178)	0.00511 (0.00699)	-0.0101 (0.00825)	0.00928 (0.00624)	-0.0189*** (0.00637)	-0.0162*** (0.00545)
ad_fmage	0.00225 (0.00210)	-0.000429 (0.000803)	0.000481 (0.000557)	-0.00206*** (0.000636)	-0.00417*** (0.00145)	-0.000194 (0.000405)	-0.000751 (0.00181)	-0.00165 (0.00109)
ad_meduc	0.0328 (0.0351)	0.0300 (0.0199)	0.000648 (0.00499)	-0.0205*** (0.00747)	0.0373 (0.0279)	-0.00390 (0.00756)	-0.00794 (0.0117)	-0.00937 (0.0110)
ad_mexper	-0.000825 (0.00165)	-0.00152* (0.000778)	0.000481 (0.000642)	-0.00177 (0.00120)	0.00456** (0.00210)	0.000127 (0.000931)	-0.00130 (0.00303)	0.00310 (0.00264)
ad_mfemale	-0.00505 (0.0404)	0.0457 (0.0297)	0.00375 (0.00949)	0.0236 (0.0306)	0.0402 (0.0420)	-0.00813 (0.0130)	-0.00607 (0.0558)	0.0601 (0.0550)
ad_lemp	0.230*** (0.0309)	0.132*** (0.0150)	0.00247 (0.00472)	0.0151 (0.0132)	0.138*** (0.0312)	0.00234 (0.00657)	-0.00421 (0.0180)	0.00890 (0.0150)
secdist	0.00744 (0.00607)	0.00414 (0.00453)	-0.00510 (0.00314)	0.000705 (0.00335)	0.00357 (0.00692)	0.00620 (0.00736)	-0.00316 (0.00650)	-0.00318 (0.00552)
seclink	0.186 (0.121)	-0.0398 (0.0623)	-0.0823 (0.0629)	0.0592 (0.0639)	0.0105 (0.127)	-0.198 (0.135)	0.0323 (0.137)	0.0660 (0.103)
Constant	0.709*** (0.0722)	0.222*** (0.0437)	0.479*** (0.0200)	0.227*** (0.0457)	0.862*** (0.0627)	0.956*** (0.0354)	0.836*** (0.0778)	0.722*** (0.0575)

Standard errors in parentheses
 *** p<0.01, ** p<0.05, * p<0.1

Table S2.E continued

VARIABLES	(17)	(18)	(19)	(20)	(21)	(22)	(23)	(24)
	reput_4	reput_5	pcf_rep	lvademp	dlemp	growth1	growth3	pcf_perf
supbuy	0.120 (0.218)	0.0127 (0.177)	-0.122 (0.156)	-0.113 (0.302)	-0.144 (0.135)	-0.181 (0.162)	0.229 (0.632)	-0.00534 (0.437)
samesup	-0.0396 (0.109)	-0.0535 (0.124)	-0.0543 (0.112)	-0.154 (0.155)	-0.0628 (0.0912)	0.0612 (0.122)	-0.140 (0.238)	-0.119 (0.203)
samecus	0.00614 (0.105)	0.0838 (0.118)	0.0223 (0.125)	-0.221 (0.160)	-0.0598 (0.113)	0.0908 (0.146)	-0.0925 (0.206)	-0.0228 (0.179)
same_sec	-0.000247 (0.0289)	-0.00125 (0.0255)	0.0131 (0.0398)	-0.153* (0.0793)	0.0164 (0.0337)	0.0199 (0.0251)	0.0360 (0.0798)	0.0258 (0.0637)
ldist	0.0117** (0.00568)	-0.0262*** (0.00539)	-0.0135* (0.00787)	-0.0290** (0.0139)	0.0147 (0.0106)	0.0196* (0.0113)	0.0233 (0.0163)	0.0263* (0.0149)
ad_fmage	0.000652 (0.000792)	6.06e-05 (0.00149)	-0.000896 (0.00168)	-0.00314 (0.00201)	0.00268 (0.00347)	-0.00258*** (0.000727)	-0.00563*** (0.00161)	-0.00396*** (0.00145)
ad_meduc	-0.00515 (0.00883)	-0.00804 (0.0112)	-0.00486 (0.0133)	-0.00711 (0.0280)	0.00370 (0.0117)	-0.00932 (0.0116)	0.00860 (0.0311)	-0.0167 (0.0174)
ad_mexper	0.00114 (0.00151)	0.00286 (0.00312)	0.00291 (0.00340)	0.000676 (0.00321)	1.61e-05 (0.00226)	-0.00271 (0.00204)	-0.00168 (0.00453)	-0.00409 (0.00283)
ad_mfemale	0.0184 (0.0299)	0.0541 (0.0597)	0.00686 (0.0613)	0.122 (0.0932)	0.103 (0.0670)	-0.0810** (0.0389)	-0.220*** (0.0687)	-0.109* (0.0582)
ad_lemf	0.0151 (0.0133)	0.0102 (0.0190)	0.00309 (0.0164)	0.0789** (0.0310)	0.00791 (0.0242)	-0.0257** (0.0118)	-0.0377 (0.0361)	-0.0235 (0.0223)
secdist	-0.00441 (0.00539)	-0.00225 (0.00537)	-0.00607 (0.00730)	0.0153 (0.0140)	-0.00289 (0.00425)	-0.00608 (0.00623)	-0.0142 (0.0158)	-0.00992 (0.0141)
seclink	0.00281 (0.129)	0.00342 (0.140)	0.0772 (0.129)	0.0856 (0.153)	0.103 (0.104)	0.239 (0.162)	0.182 (0.278)	0.309 (0.272)
Constant	0.880*** (0.0528)	0.669*** (0.0639)	1.114*** (0.0828)	1.434*** (0.126)	0.373*** (0.0738)	0.618*** (0.0746)	1.277*** (0.173)	1.085*** (0.128)

Standard errors in parentheses
 *** p<0.01, ** p<0.05, * p<0.1

Table S2.E continued

VARIABLES	(25) web	(26) email	(27) reput_D1	(28) reputD_2	(29) reputD_3	(30) reputD_4	(31) reputD_5	(32) pcf_repD
supbuy	0.0754 (0.118)	-0.149 (0.127)	-0.0249 (0.127)	-0.00735 (0.115)	-0.0531 (0.100)	0.0488 (0.136)	-0.0320 (0.0982)	-0.128 (0.202)
samesup	-0.0418 (0.0695)	-0.0256 (0.0685)	0.0347 (0.0716)	0.00691 (0.0636)	-0.0872* (0.0445)	-0.0561 (0.0577)	-0.0248 (0.0770)	-0.0936 (0.131)
samecus	0.139* (0.0771)	-0.0812 (0.0786)	0.0689 (0.0530)	-0.00805 (0.0706)	-0.0890 (0.0570)	-0.0168 (0.0602)	0.0341 (0.0807)	0.0173 (0.157)
same_sec	-0.0432 (0.0286)	-0.00901 (0.0191)	-0.0229 (0.0269)	-0.00346 (0.0190)	0.0196 (0.0168)	-0.000503 (0.0181)	0.00499 (0.0177)	0.00575 (0.0400)
ldist	-0.0253*** (0.00306)	0.00828 (0.00681)	0.000736 (0.00238)	-0.0106*** (0.00353)	-0.00919* (0.00492)	-0.000414 (0.00262)	-0.0158*** (0.00454)	-0.0306*** (0.00964)
ad_fmage	-0.000783 (0.00110)	-0.00109** (0.000533)	-6.72e-05 (0.000214)	-0.000840 (0.000913)	-0.00204*** (0.000637)	0.000622 (0.000540)	-0.000481 (0.000841)	-0.00268 (0.00177)
ad_meduc	-0.00389 (0.0138)	0.0683*** (0.0200)	-0.00358 (0.00224)	-0.00499 (0.00638)	-0.0128* (0.00772)	-0.000465 (0.00544)	-0.00838 (0.00635)	-0.0173 (0.0139)
ad_mexper	-0.000458 (0.00122)	-0.000422 (0.000639)	-0.000162 (0.000389)	-0.000941 (0.00160)	0.00174 (0.00177)	0.000808 (0.00114)	0.00176 (0.00209)	0.00239 (0.00426)
ad_mfemale	0.0465 (0.0332)	0.0439** (0.0203)	-0.00111 (0.00735)	0.00930 (0.0316)	0.0263 (0.0361)	0.00949 (0.0183)	0.0201 (0.0357)	0.0209 (0.0728)
ad_lemg	0.0766*** (0.0194)	0.113*** (0.0150)	0.00249 (0.00405)	-0.00226 (0.00950)	0.00720 (0.0104)	0.00812 (0.00891)	0.00802 (0.0114)	0.0109 (0.0214)
secdist	0.000798 (0.00389)	-0.00181 (0.00312)	0.00421 (0.00425)	-0.000384 (0.00361)	-0.00289 (0.00306)	-0.00140 (0.00294)	0.000588 (0.00360)	-0.00154 (0.00824)
seclink	-0.0355 (0.0852)	0.0402 (0.0762)	-0.0672 (0.0742)	0.0231 (0.0747)	0.0442 (0.0564)	0.0375 (0.0701)	0.00327 (0.0909)	0.0368 (0.165)
Constant	0.266*** (0.0399)	0.164*** (0.0426)	0.502*** (0.0148)	0.407*** (0.0406)	0.280*** (0.0421)	0.444*** (0.0280)	0.247*** (0.0433)	1.133*** (0.0997)

Standard errors in parentheses
 *** p<0.01, ** p<0.05, * p<0.1

Table S3.E: Results for the baseline specification with interaction terms (similar firm size x network variables) added

VARIABLES	(1) newprod	(2) invdum	(3) anyrd	(4) it	(5) pcf_tech	(6) suprat	(7) htrain	(8) ftrain
supbuy	0.0486 (0.126)	-0.0468 (0.117)	0.0945 (0.108)	-0.0731 (0.187)	0.0770 (0.240)	-0.0218 (0.0333)	0.0795 (0.107)	-0.0455 (0.134)
samesup	-0.0199 (0.0409)	0.000180 (0.0464)	0.0346 (0.0413)	-0.0869 (0.0672)	-0.0424 (0.0671)	0.0150 (0.0150)	0.0342 (0.0451)	0.00815 (0.0455)
samecus	0.0653 (0.0588)	-0.0249 (0.0704)	0.00500 (0.0696)	0.0476 (0.0943)	-0.0762 (0.0955)	0.0168 (0.0238)	0.0344 (0.0748)	0.125** (0.0622)
same_sec	-0.0311* (0.0170)	-0.0566** (0.0259)	-0.0213 (0.0140)	-0.0545* (0.0279)	-0.0997*** (0.0345)	-0.00225 (0.00484)	-0.0164 (0.0124)	-0.0301* (0.0177)
ldist	-0.00347 (0.00245)	-0.00188 (0.00179)	-0.00988* (0.00543)	-0.0148** (0.00705)	-0.0143* (0.00845)	-0.00174 (0.00158)	-0.0157*** (0.00301)	-0.0149*** (0.00294)
ad_fmage	-0.000569 (0.000570)	-0.000803*** (0.000277)	-0.000984 (0.00105)	-0.00179 (0.00130)	-0.00319* (0.00174)	-0.000143 (0.000335)	-0.000171 (0.000716)	0.00182 (0.00113)
ad_meduc	0.00855 (0.00907)	0.0142 (0.00958)	-0.0100 (0.00830)	0.0643** (0.0285)	0.0474** (0.0226)	-0.00393* (0.00237)	0.0111 (0.0184)	0.00641 (0.0160)
ad_mexper	-0.000794 (0.000889)	0.000124 (0.000387)	-0.000590 (0.00131)	-0.000939 (0.00150)	-0.00315* (0.00170)	0.000208 (0.000479)	-0.00170** (0.000799)	-0.000976 (0.000832)
ad_mfemale	-0.00325 (0.0184)	0.00138 (0.00605)	-0.00627 (0.0284)	0.0871* (0.0450)	0.00782 (0.0479)	0.00740 (0.0112)	0.0166 (0.0256)	-0.0125 (0.0178)
ad_lemf	0.00199 (0.0103)	0.0238** (0.00934)	0.0287* (0.0148)	0.182*** (0.0281)	0.118*** (0.0323)	0.0104** (0.00521)	0.0840*** (0.0163)	0.0975*** (0.0152)
sizdist	-0.0115* (0.00616)	0.00516 (0.00363)	-0.00483 (0.00481)	-0.0218** (0.00857)	-0.00896 (0.0108)	-0.00169 (0.00170)	-0.00983* (0.00516)	-0.00352 (0.00539)
sizlink	0.000278 (0.0934)	-0.00512 (0.0844)	0.0801 (0.0965)	0.149 (0.121)	0.156 (0.150)	-0.0129 (0.0262)	0.0593 (0.101)	0.0190 (0.0925)
Constant	0.490*** (0.0195)	0.473*** (0.0222)	0.267*** (0.0434)	0.444*** (0.0617)	1.010*** (0.0742)	0.173*** (0.0135)	0.328*** (0.0371)	0.277*** (0.0375)

Standard errors in parentheses. *** p<0.01, ** p<0.05, * p<0.1

Table S3.E continued

VARIABLES	(9)	(10)	(11)	(12)	(13)	(14)	(15)	(16)
	pcf_hk	directimport	sellcredit	subcont	pcf_cont	reput_1	reput_2	reput_3
supbuy	-0.0539 (0.221)	0.0234 (0.117)	-0.0116 (0.105)	0.110 (0.119)	0.113 (0.253)	-0.187 (0.206)	0.0314 (0.178)	-0.0527 (0.166)
samesup	0.0625 (0.0845)	-0.0281 (0.0514)	0.00710 (0.0430)	0.0795** (0.0396)	-0.128* (0.0776)	-0.0101 (0.0915)	0.0224 (0.0877)	-0.0831 (0.0671)
samecus	0.203 (0.124)	0.0788 (0.0575)	-0.00951 (0.0534)	0.0786 (0.0706)	0.178 (0.125)	0.0510 (0.0807)	0.0241 (0.129)	-0.0704 (0.101)
same_sec	-0.0467* (0.0260)	-0.0391** (0.0160)	-0.0169 (0.0154)	-0.00163 (0.00901)	-0.0365 (0.0285)	-0.00872 (0.0273)	-0.0140 (0.0254)	0.00337 (0.0183)
Ldist	-0.0235*** (0.00836)	-0.0115** (0.00586)	-9.70e-05 (0.00149)	0.00559 (0.00666)	-0.00865 (0.00815)	0.0106* (0.00569)	-0.0173*** (0.00559)	-0.0151*** (0.00468)
ad_fmage	0.00230 (0.00209)	-0.000401 (0.000800)	0.000485 (0.000554)	-0.00206*** (0.000637)	-0.00416*** (0.00144)	-0.000196 (0.000401)	-0.000677 (0.00181)	-0.00159 (0.00109)
ad_meduc	0.0326 (0.0351)	0.0299 (0.0199)	0.000673 (0.00498)	-0.0205*** (0.00749)	0.0372 (0.0279)	-0.00399 (0.00757)	-0.00806 (0.0117)	-0.00947 (0.0110)
ad_mexper	-0.000872 (0.00165)	-0.00154** (0.000779)	0.000481 (0.000648)	-0.00178 (0.00120)	0.00456** (0.00210)	0.000151 (0.000934)	-0.00136 (0.00301)	0.00305 (0.00262)
ad_mfemale	-0.00747 (0.0402)	0.0448 (0.0297)	0.00364 (0.00972)	0.0231 (0.0305)	0.0397 (0.0422)	-0.00722 (0.0131)	-0.00939 (0.0550)	0.0575 (0.0547)
ad_lemper	0.224*** (0.0328)	0.129*** (0.0162)	0.00198 (0.00453)	0.0141 (0.0140)	0.137*** (0.0316)	0.00377 (0.00689)	-0.0120 (0.0182)	0.00277 (0.0153)
sizdist	-0.0142 (0.0103)	-0.00622 (0.00555)	-0.00144 (0.00432)	-0.00252 (0.00496)	-0.00342 (0.00931)	0.00411 (0.00468)	-0.0213* (0.0116)	-0.0172 (0.0109)
sizlink	0.155 (0.172)	0.0634 (0.0791)	-0.0661 (0.110)	-0.0341 (0.0773)	0.0826 (0.155)	-0.0378 (0.180)	0.0416 (0.196)	0.142 (0.136)
Constant	0.707*** (0.0728)	0.221*** (0.0451)	0.486*** (0.0207)	0.228*** (0.0463)	0.859*** (0.0636)	0.946*** (0.0327)	0.852*** (0.0767)	0.736*** (0.0571)

Standard errors in parentheses
 *** p<0.01, ** p<0.05, * p<0.1

Table S3.E continued

VARIABLES	(17) reput_4	(18) reput_5	(19) pcf_rep	(20) lvademp	(21) dlemp	(22) growth1	(23) growth3	(24) pcf_perf
supbuy	0.125 (0.207)	0.0163 (0.159)	-0.0765 (0.148)	-0.0814 (0.283)	-0.0843 (0.130)	-0.0435 (0.122)	0.335 (0.656)	0.159 (0.424)
samesup	-0.0223 (0.0921)	-0.0342 (0.0760)	0.00905 (0.0823)	-0.0898 (0.114)	0.0246 (0.0699)	0.259** (0.114)	-0.0282 (0.131)	0.123 (0.145)
samecus	0.0134 (0.0939)	0.0930 (0.112)	0.0574 (0.117)	-0.175 (0.136)	-0.00862 (0.0939)	0.200 (0.149)	-0.0299 (0.203)	0.118 (0.194)
same_sec	-0.0199 (0.0254)	-0.00913 (0.0184)	-0.0106 (0.0253)	-0.0791* (0.0448)	0.00583 (0.0245)	-0.000574 (0.0180)	-0.0220 (0.0507)	-0.0109 (0.0342)
ldist	0.0105* (0.00548)	-0.0246*** (0.00540)	-0.0125 (0.00785)	-0.0218* (0.0118)	0.0146 (0.0114)	0.0214* (0.0109)	0.0231 (0.0173)	0.0267* (0.0154)
ad_fmage	0.000651 (0.000795)	0.000131 (0.00149)	-0.000819 (0.00168)	-0.00304 (0.00199)	0.00270 (0.00349)	-0.00248*** (0.000720)	-0.00553*** (0.00161)	-0.00387*** (0.00144)
ad_meduc	-0.00510 (0.00883)	-0.00813 (0.0112)	-0.00494 (0.0133)	-0.00722 (0.0280)	0.00377 (0.0117)	-0.00944 (0.0115)	0.00855 (0.0312)	-0.0164 (0.0174)
ad_mexper	0.00114 (0.00150)	0.00281 (0.00311)	0.00284 (0.00338)	0.000590 (0.00322)	-9.34e-06 (0.00228)	-0.00281 (0.00204)	-0.00181 (0.00453)	-0.00421 (0.00285)
ad_mfemale	0.0182 (0.0297)	0.0509 (0.0594)	0.00313 (0.0608)	0.118 (0.0933)	0.102 (0.0676)	-0.0855** (0.0389)	-0.224*** (0.0691)	-0.113* (0.0585)
ad_lem	0.0147 (0.0128)	0.00275 (0.0203)	-0.00544 (0.0170)	0.0686** (0.0335)	0.00557 (0.0270)	-0.0369*** (0.0135)	-0.0492 (0.0371)	-0.0340 (0.0253)
sizdist	-0.000854 (0.00575)	-0.0197** (0.00950)	-0.0232* (0.0121)	-0.0256** (0.0130)	-0.00605 (0.00997)	-0.0290*** (0.00875)	-0.0321 (0.0214)	-0.0276* (0.0158)
sizlink	-0.0867 (0.179)	-0.142 (0.167)	-0.0390 (0.188)	-0.148 (0.193)	-0.0786 (0.124)	-0.135 (0.185)	0.197 (0.338)	-0.134 (0.232)
Constant	0.887*** (0.0516)	0.683*** (0.0635)	1.135*** (0.0801)	1.431*** (0.125)	0.380*** (0.0736)	0.643*** (0.0797)	1.313*** (0.183)	1.114*** (0.138)

Standard errors in parentheses
 *** p<0.01, ** p<0.05, * p<0.1

Table S3.E continued

VARIABLES	(25) web	(26) email	(27) reput_D1	(28) reputD_2	(29) reputD_3	(30) reputD_4	(31) reputD_5	(32) pcf_repD
supbuy	0.0539 (0.113)	-0.127 (0.117)	-0.0647 (0.121)	0.00506 (0.0965)	-0.0270 (0.0941)	0.0714 (0.130)	-0.0301 (0.0835)	-0.107 (0.183)
samesup	-0.0787* (0.0410)	-0.00827 (0.0541)	-0.0169 (0.0488)	0.0203 (0.0460)	-0.0559 (0.0418)	-0.0175 (0.0498)	-0.0165 (0.0444)	-0.0625 (0.0980)
samecus	0.118* (0.0670)	-0.0706 (0.0731)	0.0396 (0.0409)	0.000112 (0.0685)	-0.0711 (0.0574)	0.00507 (0.0507)	0.0389 (0.0745)	0.0351 (0.148)
same_sec	-0.0394* (0.0205)	-0.0152 (0.0145)	-0.00524 (0.0141)	-0.00364 (0.0120)	0.00734 (0.0102)	-0.00610 (0.0131)	0.00835 (0.00888)	0.000865 (0.0242)
ldist	-0.0241*** (0.00291)	0.00934 (0.00671)	0.00166 (0.00203)	-0.00945*** (0.00308)	-0.00983** (0.00466)	-0.000753 (0.00218)	-0.0150*** (0.00441)	-0.0295*** (0.00943)
ad_fmage	-0.000751 (0.00110)	-0.00104** (0.000523)	-6.92e-05 (0.000210)	-0.000800 (0.000916)	-0.00204*** (0.000639)	0.000621 (0.000540)	-0.000460 (0.000844)	-0.00263 (0.00178)
ad_meduc	-0.00398 (0.0138)	0.0682*** (0.0199)	-0.00362 (0.00223)	-0.00506 (0.00639)	-0.0127* (0.00770)	-0.000426 (0.00543)	-0.00841 (0.00635)	-0.0174 (0.0139)
ad_mexper	-0.000477 (0.00122)	-0.000462 (0.000626)	-0.000151 (0.000390)	-0.000973 (0.00159)	0.00173 (0.00176)	0.000804 (0.00114)	0.00174 (0.00208)	0.00235 (0.00424)
ad_mfemale	0.0453 (0.0330)	0.0418** (0.0199)	-0.000679 (0.00740)	0.00752 (0.0312)	0.0261 (0.0359)	0.00929 (0.0183)	0.0192 (0.0355)	0.0187 (0.0725)
ad_lemper	0.0736*** (0.0206)	0.108*** (0.0154)	0.00324 (0.00419)	-0.00640 (0.00980)	0.00672 (0.0110)	0.00783 (0.00893)	0.00581 (0.0125)	0.00580 (0.0228)
sizdist	-0.00825* (0.00498)	-0.0136** (0.00541)	0.00222 (0.00236)	-0.0113* (0.00607)	-0.00150 (0.00556)	-0.000566 (0.00315)	-0.00575 (0.00544)	-0.0137 (0.0133)
sizlink	0.0618 (0.0728)	0.0871 (0.0923)	-0.0124 (0.0945)	0.0146 (0.101)	0.0293 (0.0770)	-0.0730 (0.0916)	-0.0575 (0.0792)	-0.0383 (0.197)
Constant	0.270*** (0.0423)	0.174*** (0.0419)	0.495*** (0.0134)	0.414*** (0.0397)	0.284*** (0.0424)	0.446*** (0.0278)	0.250*** (0.0432)	1.143*** (0.0981)

Standard errors in parentheses
 *** p<0.01, ** p<0.05, * p<0.1

Table S4.E: Results for the baseline specification with a dummy variable for location in the same town added.

VARIABLES	(1) newprod	(2) invdum	(3) anyrd	(4) it	(5) pcf_tech
supbuy	0.0515 (0.128)	-0.0460 (0.117)	0.103 (0.108)	-0.0751 (0.192)	0.0903 (0.239)
samesup	-0.0169 (0.0401)	-0.00119 (0.0457)	0.0481 (0.0404)	-0.0644 (0.0662)	-0.0170 (0.0685)
samecus	0.0657 (0.0585)	-0.0263 (0.0707)	0.00823 (0.0691)	0.0621 (0.0946)	-0.0689 (0.0964)
same_sec	-0.0322* (0.0171)	-0.0560** (0.0260)	-0.0213 (0.0141)	-0.0570** (0.0282)	-0.0998*** (0.0345)
Ldist	0.00649 (0.0113)	0.00428 (0.00638)	0.0242 (0.0149)	-0.0411*** (0.0132)	0.0393 (0.0248)
ad_fmage	-0.000612 (0.000572)	-0.000785*** (0.000273)	-0.00100 (0.00105)	-0.00187 (0.00131)	-0.00322* (0.00172)
ad_meduc	0.00905 (0.00917)	0.0143 (0.00966)	-0.00866 (0.00823)	0.0636** (0.0286)	0.0495** (0.0230)
ad_mexper	-0.000757 (0.000895)	0.000113 (0.000390)	-0.000558 (0.00131)	-0.000894 (0.00150)	-0.00309* (0.00169)
ad_mfemale	-0.00129 (0.0186)	0.000675 (0.00596)	-0.00503 (0.0284)	0.0900** (0.0453)	0.00996 (0.0480)
ad_lemp	0.00665 (0.00941)	0.0221** (0.00905)	0.0316** (0.0138)	0.189*** (0.0265)	0.123*** (0.0299)
sametown	0.0697 (0.0628)	0.0344 (0.0384)	0.214*** (0.0687)	-0.147* (0.0874)	0.338*** (0.129)
Constant	0.416*** (0.0659)	0.443*** (0.0460)	0.0594 (0.0821)	0.572*** (0.101)	0.682*** (0.152)

Standard errors in parentheses
*** p<0.01, ** p<0.05, * p<0.1

Table S4.E continued

VARIABLES	(6) suprat	(7) htrain	(8) ftrain	(9) pcf_hk
supbuy	-0.0227 (0.0340)	0.0811 (0.107)	-0.0429 (0.133)	-0.0489 (0.221)
samesup	0.0134 (0.0141)	0.0440 (0.0473)	0.0120 (0.0414)	0.0864 (0.0801)
samecus	0.0165 (0.0237)	0.0394 (0.0743)	0.126** (0.0631)	0.214* (0.124)
same_sec	-0.00250 (0.00490)	-0.0173 (0.0123)	-0.0303* (0.0177)	-0.0479* (0.0263)
ldist	-0.00638 (0.00486)	-0.0147 (0.0103)	-0.00460 (0.0116)	-0.0129 (0.0215)
ad_fmage	-0.000149 (0.000335)	-0.000207 (0.000721)	0.00180 (0.00114)	0.00225 (0.00210)
ad_meduc	-0.00409* (0.00240)	0.0113 (0.0184)	0.00684 (0.0161)	0.0332 (0.0352)
ad_mexper	0.000210 (0.000476)	-0.00167** (0.000804)	-0.000960 (0.000843)	-0.000827 (0.00164)
ad_mfemale	0.00760 (0.0112)	0.0182 (0.0258)	-0.0118 (0.0177)	-0.00519 (0.0401)
ad_lemp	0.0108** (0.00494)	0.0877*** (0.0155)	0.0991*** (0.0142)	0.230*** (0.0308)
sametown	-0.0275 (0.0304)	0.0131 (0.0610)	0.0664 (0.0659)	0.0752 (0.130)
Constant	0.198*** (0.0323)	0.310*** (0.0703)	0.211*** (0.0708)	0.627*** (0.133)

Standard errors in parentheses
 *** p<0.01, ** p<0.05, * p<0.1

Table S4.E continued

VARIABLES	(10) directimport	(11) sellcredit	(12) subcont	(13) pcf_cont
supbuy	0.0205 (0.116)	-0.0121 (0.104)	0.121 (0.120)	0.114 (0.252)
samesup	-0.0197 (0.0502)	-0.00127 (0.0403)	0.0787** (0.0367)	-0.116 (0.0746)
samecus	0.0854 (0.0566)	-0.0139 (0.0524)	0.0720 (0.0691)	0.184 (0.124)
same_sec	-0.0400** (0.0160)	-0.0171 (0.0155)	-0.00111 (0.00881)	-0.0367 (0.0284)
ldist	-0.0318*** (0.0100)	0.000235 (0.00439)	0.0613*** (0.0178)	-0.00688 (0.0280)
ad_fmage	-0.000423 (0.000805)	0.000479 (0.000556)	-0.00207*** (0.000637)	-0.00417*** (0.00145)
ad_meduc	0.0292 (0.0199)	0.000686 (0.00500)	-0.0183** (0.00710)	0.0374 (0.0281)
ad_mexper	-0.00153** (0.000780)	0.000485 (0.000645)	-0.00174 (0.00120)	0.00457** (0.00209)
ad_mfemale	0.0454 (0.0297)	0.00392 (0.00950)	0.0245 (0.0305)	0.0402 (0.0420)
ad_lemp	0.131*** (0.0150)	0.00261 (0.00473)	0.0171 (0.0133)	0.138*** (0.0313)
sametown	-0.121 (0.0787)	0.00302 (0.0270)	0.347*** (0.0787)	0.0135 (0.179)
Constant	0.333*** (0.0753)	0.482*** (0.0337)	-0.105 (0.0835)	0.845*** (0.175)

Standard errors in parentheses
 *** p<0.01, ** p<0.05, * p<0.1

Table S4.E continued

VARIABLES	(14) reput_1	(15) reput_2	(16) reput_3	(17) reput_4	(18) reput_5
supbuy	-0.186 (0.205)	0.0255 (0.179)	-0.0587 (0.172)	0.120 (0.206)	0.00681 (0.158)
samesup	-0.0154 (0.0912)	0.0299 (0.0897)	-0.0635 (0.0670)	-0.0347 (0.0909)	-0.0516 (0.0753)
samecus	0.0473 (0.0795)	0.0323 (0.129)	-0.0554 (0.0985)	0.00917 (0.0918)	0.0889 (0.111)
same_sec	-0.00822 (0.0272)	-0.0167 (0.0256)	0.00115 (0.0186)	-0.0204 (0.0255)	-0.0119 (0.0184)
ldist	0.0192 (0.0198)	-0.0567** (0.0246)	-0.0586** (0.0242)	-0.0101 (0.00907)	-0.0713*** (0.0179)
ad_fmage	-0.000181 (0.000403)	-0.000753 (0.00180)	-0.00165 (0.00109)	0.000649 (0.000792)	6.14e-05 (0.00149)
ad_meduc	-0.00372 (0.00762)	-0.00927 (0.0116)	-0.0109 (0.0112)	-0.00587 (0.00881)	-0.00967 (0.0114)
ad_mexper	0.000145 (0.000939)	-0.00133 (0.00304)	0.00307 (0.00264)	0.00113 (0.00151)	0.00284 (0.00311)
ad_mfemale	-0.00770 (0.0130)	-0.00670 (0.0559)	0.0594 (0.0548)	0.0180 (0.0298)	0.0534 (0.0598)
ad_lemp	0.00260 (0.00647)	-0.00552 (0.0178)	0.00741 (0.0147)	0.0144 (0.0132)	0.00859 (0.0189)
sametown	0.0508 (0.105)	-0.229 (0.148)	-0.257* (0.140)	-0.127* (0.0699)	-0.275*** (0.106)
Constant	0.900*** (0.114)	1.058*** (0.163)	0.971*** (0.140)	1.007*** (0.0652)	0.934*** (0.120)

Standard errors in parentheses
 *** p<0.01, ** p<0.05, * p<0.1

Table S4.E continued

VARIABLES	(19) pcf_rep	(20) lvademp	(21) dlemp	(22) growth1	(23) growth3	(24) pcf_perf
supbuy	-0.0811 (0.149)	-0.0781 (0.286)	-0.0726 (0.131)	-0.0254 (0.116)	0.295 (0.600)	0.170 (0.415)
samesup	0.00697 (0.0845)	-0.107 (0.110)	0.0169 (0.0665)	0.251** (0.115)	-0.000477 (0.130)	0.110 (0.144)
samecus	0.0594 (0.118)	-0.181 (0.137)	-0.0163 (0.0915)	0.190 (0.148)	-0.00429 (0.204)	0.112 (0.192)
same_sec	-0.0134 (0.0259)	-0.0820* (0.0446)	0.00514 (0.0246)	-0.00266 (0.0182)	-0.0246 (0.0515)	-0.0129 (0.0350)
ldist	-0.0419* (0.0236)	-0.0344 (0.0412)	0.0581*** (0.0208)	0.0867** (0.0378)	-0.122 (0.105)	0.0359 (0.0661)
ad_fmage	-0.000902 (0.00167)	-0.00314 (0.00200)	0.00267 (0.00347)	-0.00259*** (0.000726)	-0.00563*** (0.00158)	-0.00397*** (0.00145)
ad_meduc	-0.00577 (0.0133)	-0.00753 (0.0277)	0.00578 (0.0114)	-0.00652 (0.0112)	0.00239 (0.0327)	-0.0159 (0.0175)
ad_mexper	0.00289 (0.00341)	0.000665 (0.00321)	1.22e-05 (0.00225)	-0.00271 (0.00204)	-0.00175 (0.00449)	-0.00409 (0.00284)
ad_mfemale	0.00633 (0.0613)	0.121 (0.0935)	0.104 (0.0671)	-0.0790** (0.0388)	-0.223*** (0.0694)	-0.109* (0.0580)
ad_lemph	0.00219 (0.0163)	0.0783** (0.0315)	0.00920 (0.0242)	-0.0238** (0.0116)	-0.0415 (0.0341)	-0.0232 (0.0217)
sametown	-0.165 (0.138)	-0.0597 (0.234)	0.272*** (0.0926)	0.424** (0.188)	-0.870 (0.651)	0.0765 (0.368)
Constant	1.279*** (0.158)	1.472*** (0.277)	0.115 (0.119)	0.219 (0.153)	2.129*** (0.654)	1.023*** (0.343)

Standard errors in parentheses
*** p<0.01, ** p<0.05, * p<0.1

Table S4.E continued

VARIABLES	(25) web	(26) email	(27) reput_D1	(28) reputD_2	(29) reputD_3	(30) reputD_4	(31) reputD_5	(32) pcf_repD
supbuy	0.0528 (0.114)	-0.128 (0.119)	-0.0658 (0.121)	0.000924 (0.0973)	-0.0319 (0.0970)	0.0701 (0.130)	-0.0345 (0.0826)	-0.115 (0.183)
samesup	-0.0695* (0.0392)	0.00511 (0.0523)	-0.0192 (0.0482)	0.0230 (0.0465)	-0.0533 (0.0441)	-0.0271 (0.0486)	-0.0240 (0.0454)	-0.0672 (0.102)
samecus	0.124* (0.0676)	-0.0620 (0.0737)	0.0388 (0.0405)	0.00431 (0.0687)	-0.0669 (0.0557)	0.000324 (0.0499)	0.0372 (0.0739)	0.0373 (0.147)
same_sec	-0.0403** (0.0206)	-0.0167 (0.0147)	-0.00506 (0.0141)	-0.00512 (0.0121)	0.00688 (0.0102)	-0.00625 (0.0131)	0.00744 (0.00895)	-0.00113 (0.0247)
ldist	-0.0360** (0.0143)	-0.00510 (0.0111)	-0.00200 (0.00861)	-0.0349*** (0.0132)	-0.0361* (0.0206)	-0.00344 (0.00791)	-0.0358*** (0.0136)	-0.0719** (0.0331)
ad_fmage	-0.000780 (0.00110)	-0.00109** (0.000533)	-6.08e-05 (0.000213)	-0.000840 (0.000911)	-0.00204*** (0.000635)	0.000619 (0.000539)	-0.000480 (0.000838)	-0.00268 (0.00177)
ad_meduc	-0.00431 (0.0138)	0.0679*** (0.0200)	-0.00379* (0.00228)	-0.00587 (0.00625)	-0.0137* (0.00782)	-0.000537 (0.00544)	-0.00913 (0.00647)	-0.0188 (0.0140)
ad_mexper	-0.000461 (0.00121)	-0.000433 (0.000641)	-0.000159 (0.000389)	-0.000957 (0.00160)	0.00172 (0.00176)	0.000804 (0.00114)	0.00174 (0.00208)	0.00237 (0.00426)
ad_mfemale	0.0464 (0.0332)	0.0437** (0.0202)	-0.00108 (0.00732)	0.00888 (0.0317)	0.0259 (0.0360)	0.00939 (0.0183)	0.0198 (0.0358)	0.0202 (0.0729)
ad_lemph	0.0762*** (0.0194)	0.112*** (0.0150)	0.00229 (0.00407)	-0.00314 (0.00938)	0.00629 (0.0102)	0.00803 (0.00892)	0.00727 (0.0113)	0.00940 (0.0211)
sametown	-0.0676 (0.0873)	-0.0796 (0.0667)	-0.0242 (0.0471)	-0.149* (0.0789)	-0.161 (0.117)	-0.0163 (0.0459)	-0.125 (0.0813)	-0.253 (0.196)
Constant	0.329*** (0.0946)	0.243*** (0.0680)	0.520*** (0.0489)	0.550*** (0.0876)	0.437*** (0.120)	0.461*** (0.0529)	0.365*** (0.0909)	1.376*** (0.218)

Standard errors in parentheses
 *** p<0.01, ** p<0.05, * p<0.1

Table S5.E: Results for an alternative specification in which a single dummy variable for connectedness (*anylink*) replaces the three trading relationship dummies in the baseline specification

VARIABLES	(1) newprod	(2) invdum	(3) anyrd	(4) it	(5) pcf_tech	(6) suprat	(7) htrain	(8) ftrain
Anylink	0.0179 (0.0346)	-0.0111 (0.0404)	0.0406 (0.0369)	-0.0210 (0.0506)	-0.0428 (0.0618)	0.00868 (0.0132)	0.0502 (0.0425)	0.0445 (0.0383)
same_sec	-0.0327* (0.0171)	-0.0561** (0.0260)	-0.0216 (0.0141)	-0.0573** (0.0280)	-0.1000*** (0.0346)	-0.00228 (0.00493)	-0.0174 (0.0123)	-0.0306* (0.0178)
Ldist	-0.00477** (0.00238)	-0.00128 (0.00175)	-0.0105* (0.00543)	-0.0172** (0.00694)	-0.0154* (0.00833)	-0.00194 (0.00159)	-0.0168*** (0.00298)	-0.0153*** (0.00292)
ad_fmage	-0.000607 (0.000574)	-0.000786*** (0.000274)	-0.00100 (0.00105)	-0.00186 (0.00131)	-0.00322* (0.00173)	-0.000149 (0.000335)	-0.000208 (0.000718)	0.00181 (0.00114)
ad_meduc	0.00859 (0.00905)	0.0142 (0.00956)	-0.00998 (0.00833)	0.0644** (0.0286)	0.0474** (0.0226)	-0.00392* (0.00237)	0.0112 (0.0184)	0.00643 (0.0160)
ad_mexper	-0.000768 (0.000897)	0.000113 (0.000387)	-0.000576 (0.00132)	-0.000886 (0.00151)	-0.00313* (0.00170)	0.000211 (0.000477)	-0.00167** (0.000804)	-0.000977 (0.000837)
ad_mfemale	-0.00150 (0.0186)	0.000617 (0.00597)	-0.00558 (0.0285)	0.0904** (0.0454)	0.00906 (0.0482)	0.00764 (0.0111)	0.0181 (0.0258)	-0.0121 (0.0177)
ad_lemp	0.00628 (0.00943)	0.0219** (0.00902)	0.0304** (0.0137)	0.189*** (0.0264)	0.121*** (0.0298)	0.0110** (0.00490)	0.0876*** (0.0155)	0.0987*** (0.0143)
Constant	0.483*** (0.0191)	0.475*** (0.0216)	0.264*** (0.0421)	0.431*** (0.0598)	1.005*** (0.0714)	0.172*** (0.0132)	0.323*** (0.0363)	0.275*** (0.0363)

Standard errors in parentheses
*** p<0.01, ** p<0.05, * p<0.1

Table S5.E continued

VARIABLES	(9)	(10)	(11)	(12)	(13)	(14)	(15)	(16)
	pcf_hk	directimport	sellcredit	subcont	pcf_cont	reput_1	reput_2	reput_3
anylink	0.126*	0.0158	-0.0111	0.0910***	0.00262	-0.0115	0.0288	-0.0624
	(0.0732)	(0.0383)	(0.0333)	(0.0348)	(0.0720)	(0.0662)	(0.0766)	(0.0605)
same_sec	-0.0482*	-0.0400**	-0.0169	-0.00209	-0.0381	-0.00833	-0.0161	0.00153
	(0.0261)	(0.0160)	(0.0155)	(0.00909)	(0.0286)	(0.0272)	(0.0257)	(0.0187)
ldist	-0.0251***	-0.0123**	-0.000268	0.00531	-0.00900	0.0111**	-0.0198***	-0.0171***
	(0.00825)	(0.00572)	(0.00143)	(0.00670)	(0.00797)	(0.00562)	(0.00578)	(0.00487)
ad_fmage	0.00225	-0.000419	0.000479	-0.00207***	-0.00415***	-0.000180	-0.000755	-0.00165
	(0.00210)	(0.000805)	(0.000556)	(0.000635)	(0.00144)	(0.000403)	(0.00180)	(0.00109)
ad_meduc	0.0328	0.0299	0.000664	-0.0205***	0.0371	-0.00396	-0.00792	-0.00931
	(0.0351)	(0.0199)	(0.00501)	(0.00751)	(0.0279)	(0.00760)	(0.0117)	(0.0110)
ad_mexper	-0.000847	-0.00153**	0.000484	-0.00178	0.00455**	0.000134	-0.00131	0.00309
	(0.00165)	(0.000778)	(0.000643)	(0.00120)	(0.00209)	(0.000930)	(0.00304)	(0.00264)
ad_mfemale	-0.00553	0.0457	0.00389	0.0235	0.0401	-0.00790	-0.00615	0.0601
	(0.0402)	(0.0297)	(0.00948)	(0.0306)	(0.0420)	(0.0130)	(0.0558)	(0.0550)
ad_lemp	0.229***	0.131***	0.00257	0.0151	0.139***	0.00220	-0.00418	0.00894
	(0.0309)	(0.0150)	(0.00472)	(0.0132)	(0.0312)	(0.00663)	(0.0180)	(0.0150)
Constant	0.700***	0.218***	0.485***	0.226***	0.858***	0.949***	0.840***	0.726***
	(0.0716)	(0.0440)	(0.0201)	(0.0456)	(0.0625)	(0.0329)	(0.0775)	(0.0575)

Standard errors in parentheses
 *** p<0.01, ** p<0.05, * p<0.1

Table S5.E continued

VARIABLES	(17) reput_4	(18) reput_5	(19) pcf_rep	(20) lvademp	(21) dlemp	(22) growth1	(23) growth3	(24) pcf_perf
anylink	-0.00813 (0.0637)	0.0132 (0.0651)	0.0229 (0.0766)	-0.163** (0.0825)	0.000561 (0.0543)	0.202** (0.101)	0.0211 (0.126)	0.110 (0.132)
same_sec	-0.0204 (0.0253)	-0.0123 (0.0186)	-0.0133 (0.0258)	-0.0811* (0.0446)	0.00513 (0.0245)	-0.00213 (0.0182)	-0.0242 (0.0514)	-0.0124 (0.0348)
ldist	0.0104* (0.00544)	-0.0268*** (0.00528)	-0.0151** (0.00735)	-0.0248** (0.0122)	0.0139 (0.0106)	0.0178* (0.0108)	0.0193 (0.0168)	0.0234 (0.0149)
ad_fmage	0.000651 (0.000791)	6.48e-05 (0.00149)	-0.000903 (0.00168)	-0.00314 (0.00200)	0.00267 (0.00347)	-0.00260*** (0.000734)	-0.00564*** (0.00161)	-0.00397*** (0.00146)
ad_meduc	-0.00519 (0.00884)	-0.00804 (0.0112)	-0.00474 (0.0133)	-0.00728 (0.0280)	0.00388 (0.0117)	-0.00916 (0.0116)	0.00862 (0.0313)	-0.0166 (0.0174)
ad_mexper	0.00114 (0.00151)	0.00286 (0.00312)	0.00290 (0.00340)	0.000673 (0.00321)	9.82e-06 (0.00226)	-0.00274 (0.00205)	-0.00170 (0.00455)	-0.00411 (0.00285)
ad_mfemale	0.0184 (0.0299)	0.0541 (0.0598)	0.00673 (0.0613)	0.121 (0.0932)	0.103 (0.0670)	-0.0815** (0.0389)	-0.220*** (0.0686)	-0.110* (0.0583)
ad_lempe	0.0152 (0.0132)	0.0103 (0.0190)	0.00313 (0.0164)	0.0786** (0.0311)	0.00786 (0.0242)	-0.0259** (0.0118)	-0.0373 (0.0363)	-0.0235 (0.0224)
Constant	0.886*** (0.0527)	0.671*** (0.0637)	1.121*** (0.0818)	1.416*** (0.120)	0.376*** (0.0731)	0.626*** (0.0777)	1.293*** (0.179)	1.097*** (0.133)

Standard errors in parentheses

*** p<0.01, ** p<0.05, * p<0.1

Table S5.E continued

VARIABLES	(25) web	(26) email	(27) reput_D1	(28) reputD_2	(29) reputD_3	(30) reputD_4	(31) reputD_5	(32) pcf_repD
anylink	0.0100 (0.0363)	-0.0310 (0.0371)	-0.00607 (0.0347)	0.0137 (0.0400)	-0.0567 (0.0383)	-0.0119 (0.0354)	0.00523 (0.0407)	-0.0296 (0.0912)
same_sec	-0.0411** (0.0205)	-0.0161 (0.0146)	-0.00511 (0.0141)	-0.00460 (0.0122)	0.00709 (0.0103)	-0.00638 (0.0131)	0.00716 (0.00899)	-0.00126 (0.0246)
ldist	-0.0250*** (0.00300)	0.00777 (0.00657)	0.00193 (0.00201)	-0.0108*** (0.00316)	-0.00999** (0.00469)	-0.000812 (0.00225)	-0.0156*** (0.00431)	-0.0310*** (0.00889)
ad_fmage	-0.000771 (0.00109)	-0.00109** (0.000534)	-5.91e-05 (0.000213)	-0.000843 (0.000912)	-0.00204*** (0.000636)	0.000621 (0.000538)	-0.000479 (0.000842)	-0.00268 (0.00177)
ad_meduc	-0.00398 (0.0138)	0.0684*** (0.0200)	-0.00363 (0.00226)	-0.00498 (0.00639)	-0.0127* (0.00773)	-0.000488 (0.00544)	-0.00836 (0.00638)	-0.0173 (0.0140)
ad_mexper	-0.000464 (0.00122)	-0.000422 (0.000641)	-0.000162 (0.000390)	-0.000943 (0.00160)	0.00174 (0.00177)	0.000805 (0.00114)	0.00176 (0.00209)	0.00239 (0.00426)
ad_mfemale	0.0465 (0.0333)	0.0439** (0.0202)	-0.00106 (0.00734)	0.00925 (0.0316)	0.0263 (0.0361)	0.00943 (0.0183)	0.0201 (0.0357)	0.0209 (0.0728)
ad_lemp	0.0767*** (0.0194)	0.113*** (0.0150)	0.00241 (0.00408)	-0.00228 (0.00951)	0.00726 (0.0104)	0.00818 (0.00889)	0.00802 (0.0114)	0.0109 (0.0214)
Constant	0.265*** (0.0404)	0.167*** (0.0421)	0.497*** (0.0133)	0.408*** (0.0401)	0.283*** (0.0425)	0.446*** (0.0280)	0.246*** (0.0430)	1.135*** (0.0995)

Standard errors in parentheses
 *** p<0.01, ** p<0.05, * p<0.1

Table S6.E: Results for the baseline specification with the geographical distance variable omitted

VARIABLES	(1) newprod	(2) invdum	(3) anyrd	(4) it	(5) pcf_tech	(6) suprat	(7) htrain	(8) ftrain
supbuy	0.0567 (0.127)	-0.0451 (0.117)	0.112 (0.110)	-0.0429 (0.187)	0.104 (0.242)	-0.0188 (0.0332)	0.107 (0.103)	-0.0208 (0.129)
samesup	-0.0119 (0.0394)	1.25e-05 (0.0452)	0.0585 (0.0417)	-0.0425 (0.0647)	-0.00192 (0.0681)	0.0159 (0.0139)	0.0639 (0.0456)	0.0296 (0.0404)
samecus	0.0702 (0.0586)	-0.0249 (0.0706)	0.0189 (0.0697)	0.0732 (0.0962)	-0.0530 (0.0980)	0.0175 (0.0240)	0.0522 (0.0736)	0.139** (0.0608)
same_sec	-0.0328* (0.0171)	-0.0562** (0.0260)	-0.0227 (0.0141)	-0.0583** (0.0277)	-0.102*** (0.0345)	-0.00262 (0.00494)	-0.0189 (0.0125)	-0.0318* (0.0176)
ad_fmage	-0.000527 (0.000573)	-0.000762*** (0.000273)	-0.000820 (0.00107)	-0.00157 (0.00131)	-0.00295* (0.00174)	-0.000115 (0.000326)	8.61e-05 (0.000705)	0.00207* (0.00113)
ad_meduc	0.00723 (0.00897)	0.0138 (0.00949)	-0.0130 (0.00844)	0.0594** (0.0281)	0.0430* (0.0227)	-0.00449* (0.00233)	0.00625 (0.0185)	0.00194 (0.0159)
ad_mexper	-0.000720 (0.000899)	0.000122 (0.000378)	-0.000484 (0.00133)	-0.000725 (0.00153)	-0.00299* (0.00171)	0.000230 (0.000482)	-0.00152* (0.000843)	-0.000829 (0.000860)
ad_mfemale	0.000367 (0.0187)	0.00108 (0.00591)	-0.00157 (0.0287)	0.0970** (0.0459)	0.0150 (0.0487)	0.00841 (0.0116)	0.0246 (0.0259)	-0.00612 (0.0177)
ad_lemp	0.00597 (0.00947)	0.0218** (0.00904)	0.0298** (0.0137)	0.189*** (0.0264)	0.120*** (0.0298)	0.0109** (0.00490)	0.0866*** (0.0152)	0.0979*** (0.0142)
Constant	0.461*** (0.0215)	0.470*** (0.0191)	0.217*** (0.0393)	0.354*** (0.0585)	0.936*** (0.0678)	0.163*** (0.0129)	0.247*** (0.0403)	0.206*** (0.0382)

Standard errors in parentheses
*** p<0.01, ** p<0.05, * p<0.1

Table S6.E continued

VARIABLES	(9) pcf_hk	(10) directimport	(11) sellcredit	(12) subcont	(13) pcf_cont	(14) reput_1	(15) reput_2	(16) reput_3
supbuy	-0.0117 (0.211)	0.0439 (0.117)	-0.0118 (0.105)	0.101 (0.118)	0.128 (0.252)	-0.205 (0.204)	0.0643 (0.176)	-0.0232 (0.164)
samesup	0.115 (0.0780)	-0.00401 (0.0490)	-0.000994 (0.0404)	0.0692* (0.0356)	-0.106 (0.0754)	-0.0290 (0.0920)	0.0556 (0.0893)	-0.0408 (0.0662)
samecus	0.234** (0.119)	0.0930 (0.0593)	-0.0137 (0.0524)	0.0726 (0.0716)	0.191 (0.125)	0.0397 (0.0807)	0.0441 (0.131)	-0.0459 (0.0995)
same_sec	-0.0503* (0.0262)	-0.0409** (0.0162)	-0.0172 (0.0155)	-0.00149 (0.00911)	-0.0375 (0.0286)	-0.00732 (0.0273)	-0.0180 (0.0256)	0.000124 (0.0188)
ad_fmage	0.00269 (0.00209)	-0.000210 (0.000823)	0.000484 (0.000548)	-0.00216*** (0.000651)	-0.00401*** (0.00144)	-0.000373 (0.000409)	-0.000410 (0.00181)	-0.00136 (0.00108)
ad_meduc	0.0254 (0.0348)	0.0263 (0.0198)	0.000593 (0.00493)	-0.0188*** (0.00718)	0.0345 (0.0277)	-0.000792 (0.00740)	-0.0137 (0.0117)	-0.0143 (0.0111)
ad_mexper	-0.000609 (0.00169)	-0.00141* (0.000775)	0.000487 (0.000640)	-0.00183 (0.00120)	0.00465** (0.00208)	4.15e-05 (0.000930)	-0.00113 (0.00305)	0.00325 (0.00265)
ad_mfemale	0.00424 (0.0404)	0.0504* (0.0291)	0.00401 (0.00943)	0.0215 (0.0318)	0.0437 (0.0424)	-0.0121 (0.0135)	0.00148 (0.0561)	0.0666 (0.0555)
ad_lemp	0.228*** (0.0304)	0.131*** (0.0150)	0.00258 (0.00473)	0.0153 (0.0133)	0.138*** (0.0310)	0.00292 (0.00671)	-0.00527 (0.0179)	0.00797 (0.0150)
Constant	0.586*** (0.0711)	0.162*** (0.0380)	0.484*** (0.0178)	0.250*** (0.0440)	0.817*** (0.0570)	0.998*** (0.0199)	0.751*** (0.0754)	0.649*** (0.0571)

Standard errors in parentheses
 *** p<0.01, ** p<0.05, * p<0.1

Table S6.E continued

VARIABLES	(17) reput_4	(18) reput_5	(19) pcf_rep	(20) lvademp	(21) dlemp	(22) growth1	(23) growth3	(24) pcf_perf
supbuy	0.108 (0.206)	0.0583 (0.156)	-0.0517 (0.146)	-0.0359 (0.285)	-0.106 (0.137)	-0.0709 (0.127)	0.312 (0.654)	0.142 (0.426)
samesup	-0.0459 (0.0936)	-0.0171 (0.0723)	0.0265 (0.0825)	-0.0764 (0.102)	-0.00414 (0.0610)	0.225** (0.109)	-0.0204 (0.127)	0.0781 (0.135)
samecus	-0.000330 (0.0920)	0.105 (0.113)	0.0686 (0.117)	-0.163 (0.135)	-0.0209 (0.0934)	0.181 (0.149)	-0.0232 (0.200)	0.0982 (0.192)
same_sec	-0.0192 (0.0254)	-0.0138 (0.0184)	-0.0144 (0.0255)	-0.0842* (0.0448)	0.00663 (0.0250)	-0.00176 (0.0185)	-0.0221 (0.0514)	-0.0102 (0.0349)
ad_fmage	0.000466 (0.000790)	0.000527 (0.00149)	-0.000639 (0.00166)	-0.00273 (0.00202)	0.00244 (0.00339)	-0.00290*** (0.000776)	-0.00598*** (0.00168)	-0.00434*** (0.00152)
ad_meduc	-0.00205 (0.00862)	-0.0159 (0.0112)	-0.00923 (0.0134)	-0.0141 (0.0279)	0.00832 (0.0119)	-0.00339 (0.0103)	0.0153 (0.0306)	-0.00830 (0.0156)
ad_mexper	0.00104 (0.00153)	0.00310 (0.00314)	0.00304 (0.00340)	0.000874 (0.00322)	-0.000134 (0.00233)	-0.00288 (0.00209)	-0.00199 (0.00446)	-0.00440 (0.00286)
ad_mfemale	0.0144 (0.0298)	0.0644 (0.0604)	0.0126 (0.0612)	0.131 (0.0906)	0.0967 (0.0692)	-0.0901** (0.0414)	-0.229*** (0.0687)	-0.121* (0.0620)
ad_lemp	0.0157 (0.0133)	0.00871 (0.0189)	0.00232 (0.0164)	0.0773** (0.0313)	0.00862 (0.0236)	-0.0249** (0.0118)	-0.0368 (0.0359)	-0.0229 (0.0219)
Constant	0.933*** (0.0482)	0.551*** (0.0645)	1.053*** (0.0707)	1.303*** (0.0940)	0.438*** (0.0651)	0.706*** (0.0995)	1.380*** (0.159)	1.202*** (0.152)

Standard errors in parentheses
 *** p<0.01, ** p<0.05, * p<0.1

Table S6.E continued

VARIABLES	(25) web	(26) email	(27) reput_D1	(28) reputD_2	(29) reputD_3	(30) reputD_4	(31) reputD_5	(32) pcf_repD
supbuy	0.0947 (0.110)	-0.138 (0.120)	-0.0680 (0.121)	0.0228 (0.0946)	-0.0108 (0.0933)	0.0719 (0.130)	-0.00565 (0.0827)	-0.0577 (0.179)
samesup	-0.0391 (0.0405)	-0.00338 (0.0530)	-0.0213 (0.0487)	0.0372 (0.0461)	-0.0399 (0.0430)	-0.0260 (0.0491)	-0.00425 (0.0442)	-0.0280 (0.0990)
samecus	0.142** (0.0702)	-0.0689 (0.0757)	0.0371 (0.0405)	0.0104 (0.0694)	-0.0615 (0.0555)	0.000717 (0.0497)	0.0473 (0.0752)	0.0573 (0.146)
same_sec	-0.0424** (0.0202)	-0.0158 (0.0147)	-0.00484 (0.0141)	-0.00579 (0.0121)	0.00631 (0.0105)	-0.00629 (0.0130)	0.00628 (0.00905)	-0.00341 (0.0243)
ad_fmage	-0.000344 (0.00109)	-0.00122** (0.000568)	-9.45e-05 (0.000213)	-0.000654 (0.000912)	-0.00187*** (0.000632)	0.000633 (0.000548)	-0.000208 (0.000842)	-0.00214 (0.00177)
ad_meduc	-0.0113 (0.0133)	0.0706*** (0.0203)	-0.00308 (0.00215)	-0.00813 (0.00636)	-0.0157* (0.00804)	-0.000676 (0.00538)	-0.0130** (0.00656)	-0.0264* (0.0149)
ad_mexper	-0.000230 (0.00127)	-0.000495 (0.000597)	-0.000174 (0.000386)	-0.000846 (0.00161)	0.00183 (0.00177)	0.000813 (0.00114)	0.00190 (0.00209)	0.00267 (0.00424)
ad_mfemale	0.0562* (0.0340)	0.0409** (0.0196)	-0.00175 (0.00740)	0.0134 (0.0317)	0.0301 (0.0367)	0.00974 (0.0183)	0.0261 (0.0362)	0.0328 (0.0733)
ad_lemp	0.0752*** (0.0193)	0.113*** (0.0149)	0.00254 (0.00408)	-0.00286 (0.00952)	0.00668 (0.0104)	0.00808 (0.00882)	0.00713 (0.0113)	0.00916 (0.0213)
Constant	0.152*** (0.0396)	0.202*** (0.0328)	0.505*** (0.0104)	0.359*** (0.0378)	0.238*** (0.0369)	0.442*** (0.0326)	0.175*** (0.0374)	0.995*** (0.0852)

Standard errors in parentheses
 *** p<0.01, ** p<0.05, * p<0.1

Part II: Results for the Sudan

Table S1.S: Results for specifications with dummy variables for web, email and perceived consequences of disputes

VARIABLES	(1) Web	(2) email	(3) reput_D1	(4) reputD_2	(5) reputD_3	(6) reputD_4	(7) reputD_5	(8) pcf_repD
Supbuy	0.0201 (0.330)	0.422 (0.362)	-0.461** (0.186)	-0.220 (0.331)	0.307 (0.261)	0.282 (0.343)	0.357 (0.365)	0.403 (0.654)
samesup	-0.116* (0.0618)	-0.133** (0.0639)	-0.0748 (0.0882)	-0.0456 (0.0822)	-0.0410 (0.0811)	-0.0600 (0.0743)	-0.0665 (0.0839)	-0.100 (0.140)
samecus	0.135*** (0.0374)	0.119*** (0.0300)	0.0352 (0.0360)	0.00193 (0.0450)	-0.0673 (0.0696)	-0.0878 (0.0651)	0.0786** (0.0379)	0.0995 (0.101)
same_sec	-0.0232 (0.0151)	-0.0628*** (0.0192)	-0.0122 (0.0139)	-0.0151 (0.0154)	0.00143 (0.0118)	-0.00288 (0.0113)	0.0198** (0.00982)	0.0151 (0.0231)
Ldist	-0.00970*** (0.00332)	-0.0153*** (0.00236)	-0.00603*** (0.00171)	-0.00417** (0.00191)	-0.000201 (0.00302)	-0.00280 (0.00220)	-0.00233 (0.00387)	0.00565 (0.00673)
ad_fmage	-0.00224*** (0.000511)	-0.000539 (0.000915)	-0.000665 (0.000547)	0.000387 (0.000692)	0.000438 (0.000803)	-0.000245 (0.000622)	0.00110 (0.00115)	-0.000492 (0.00121)
ad_meduc	-0.00629 (0.00611)	0.0166 (0.0108)	-0.00185 (0.00285)	0.00253 (0.00439)	0.00206 (0.00528)	0.000247 (0.00489)	0.00507 (0.00615)	-0.00423 (0.00882)
ad_mexper	0.000328 (0.00129)	-0.00140** (0.000569)	0.000439 (0.000601)	0.000105 (0.000560)	-0.000964 (0.000597)	-0.000796 (0.000688)	-0.000885 (0.00107)	-0.000556 (0.00186)
ad_mfemale	0.239*** (0.0527)	0.130*** (0.0431)	0.0277 (0.0244)	0.00221 (0.0204)	-0.00538 (0.0228)	0.0114 (0.0258)	0.0190 (0.0293)	0.0656 (0.0552)
ad_lemper	0.0819*** (0.0218)	0.0809*** (0.0227)	0.0121 (0.0101)	-0.00904 (0.00658)	-0.00439 (0.00852)	-0.0177*** (0.00583)	-0.0186** (0.00930)	-0.0166 (0.0154)
Constant	0.213*** (0.0363)	0.321*** (0.0353)	0.468*** (0.0214)	0.484*** (0.0201)	0.450*** (0.0258)	0.492*** (0.0201)	0.396*** (0.0383)	1.105*** (0.0531)

Standard errors in parentheses
 *** p<0.01, ** p<0.05, * p<0.1

Table S2.S: Results for the baseline specification with interaction terms (same sector x network variables) added

VARIABLES	(1) newprod	(2) invdum	(3) anyrd	(4) it	(5) pcf_tech	(6) suprat	(7) htrain	(8) ftrain
supbuy	0.0838 (0.363)	-0.210 (0.328)	-0.302** (0.134)	0.418 (0.586)	-0.258 (0.231)	-0.101 (0.0894)	-0.124 (0.265)	0.378 (0.346)
samesup	-0.0210 (0.0842)	-0.160* (0.0820)	-0.150* (0.0804)	-0.303** (0.131)	-0.274* (0.142)	-0.0141 (0.0468)	0.0298 (0.0921)	-0.0122 (0.0586)
samecus	0.0415 (0.0263)	0.00296 (0.0355)	0.132*** (0.0363)	0.220*** (0.0623)	0.187* (0.0988)	-0.0443 (0.0293)	0.0826** (0.0396)	0.0219 (0.0704)
same_sec	-0.00501 (0.0199)	-0.0138 (0.0269)	-0.0238 (0.0188)	-0.109** (0.0486)	-0.0577 (0.0388)	-0.00136 (0.0117)	-0.0280 (0.0245)	-0.0251 (0.0218)
ldist	4.00e-05 (0.00172)	-0.000943 (0.00240)	-0.0126*** (0.00302)	-0.0224*** (0.00545)	-0.0184*** (0.00614)	0.00312 (0.00201)	-0.00786** (0.00308)	-0.000860 (0.00438)
ad_fmage	0.000122 (0.000283)	0.000256 (0.000368)	0.000360 (0.00103)	-0.00318*** (0.00120)	-0.00102 (0.00133)	-0.000523* (0.000299)	-0.000422 (0.000662)	0.000879 (0.000992)
ad_meduc	0.00570 (0.00616)	0.0409*** (0.0144)	0.00758 (0.00926)	0.0189 (0.0167)	0.0664*** (0.0236)	0.00381 (0.00339)	-0.000344 (0.00577)	-0.0144*** (0.00474)
ad_mexper	-1.72e-06 (0.000287)	-0.000301 (0.000265)	-0.000409 (0.00116)	-2.83e-05 (0.00218)	-0.000121 (0.00240)	0.000258 (0.000598)	-0.00155*** (0.000501)	0.000637 (0.00108)
ad_mfemale	0.00121 (0.00629)	0.0355* (0.0187)	0.0978** (0.0396)	0.435*** (0.0909)	0.241*** (0.0751)	0.0298* (0.0176)	0.0446 (0.0375)	0.0848 (0.0542)
ad_lemp	0.0231** (0.00911)	0.0524*** (0.0143)	0.0394** (0.0175)	0.167*** (0.0421)	0.197*** (0.0457)	0.0182*** (0.00569)	0.0567*** (0.0170)	0.0780*** (0.0205)
secdist	0.00264 (0.00423)	0.00283 (0.00470)	0.00262 (0.00397)	0.00285 (0.00836)	0.00657 (0.00808)	0.000701 (0.00224)	-0.00142 (0.00439)	0.00385 (0.00423)
seclink	-0.130 (0.0960)	0.0200 (0.0816)	-0.0662 (0.0833)	0.0773 (0.120)	-0.0660 (0.130)	0.0322 (0.0428)	-0.000292 (0.0753)	-0.00623 (0.0703)
Constant	0.461*** (0.0172)	0.375*** (0.0308)	0.332*** (0.0360)	0.507*** (0.0654)	0.812*** (0.0686)	0.292*** (0.0160)	0.377*** (0.0346)	0.0977** (0.0381)

Standard errors in parentheses
*** p<0.01, ** p<0.05, * p<0.1

Table S2.S continued

VARIABLES	(9)	(10)	(11)	(12)	(13)	(14)	(15)	(16)
	pcf_hk	directimport	sellcredit	subcont	pcf_cont	reput_1	reput_2	reput_3
Supbuy	-0.209 (0.344)	-0.418** (0.175)	-0.459** (0.192)	0.0418 (0.332)	-0.822** (0.392)	-0.752* (0.390)	-0.229 (0.636)	0.534 (0.520)
Samesup	0.0648 (0.157)	-0.145* (0.0878)	-0.00667 (0.0788)	0.0414 (0.0743)	0.0172 (0.153)	-0.197 (0.177)	-0.104 (0.166)	-0.0594 (0.158)
samecus	0.171 (0.141)	-0.0495 (0.0429)	-0.0143 (0.0451)	-0.0332 (0.0685)	-0.0460 (0.106)	0.0466 (0.0544)	0.0242 (0.0665)	-0.112 (0.116)
same_sec	-0.0778* (0.0470)	-0.0809** (0.0337)	-0.0152 (0.0262)	-0.0109 (0.0183)	-0.0969* (0.0568)	-0.000360 (0.0337)	-0.0586 (0.0471)	-0.0196 (0.0329)
ldist	-0.00648 (0.00844)	0.00673** (0.00325)	0.00892** (0.00440)	-0.00880** (0.00423)	0.00715 (0.00962)	-0.00654** (0.00321)	-0.00712** (0.00321)	-0.000818 (0.00330)
ad_fmage	0.000209 (0.00183)	9.67e-05 (0.000238)	-8.44e-05 (0.000581)	-0.000669 (0.000562)	0.000294 (0.00106)	-0.000854 (0.000725)	0.000376 (0.00106)	0.000526 (0.000943)
ad_meduc	-0.0147 (0.0131)	0.0215* (0.0112)	0.00583 (0.00657)	0.00165 (0.00477)	0.0279 (0.0173)	0.000870 (0.00727)	0.00329 (0.00754)	0.00230 (0.00795)
ad_mexper	-0.000751 (0.00186)	-9.70e-05 (0.000304)	-0.000213 (0.000727)	-0.000397 (0.000632)	-0.000630 (0.00120)	0.000670 (0.000804)	0.000130 (0.000918)	-0.00114 (0.000702)
ad_mfemale	0.204* (0.114)	0.00290 (0.00675)	-0.0164 (0.0126)	0.0110 (0.0382)	-0.00177 (0.0392)	0.0297 (0.0332)	0.00214 (0.0341)	-0.0102 (0.0252)
ad_lemp	0.207*** (0.0499)	0.0658*** (0.0145)	0.00494 (0.00781)	-0.00398 (0.0123)	0.0977*** (0.0264)	0.0220 (0.0157)	-0.0130 (0.0113)	-0.00427 (0.0115)
secdist	0.00306 (0.00872)	0.0117** (0.00572)	0.00195 (0.00557)	0.00115 (0.00395)	0.0117 (0.0104)	-0.00229 (0.00729)	0.00842 (0.00806)	0.00366 (0.00605)
seclink	0.0288 (0.168)	0.0323 (0.0868)	0.0537 (0.0779)	0.0182 (0.0708)	0.0618 (0.153)	0.0901 (0.140)	0.0705 (0.137)	0.0602 (0.141)
Constant	0.740*** (0.0815)	0.364*** (0.0299)	0.419*** (0.0313)	0.223*** (0.0434)	0.907*** (0.0587)	0.948*** (0.0309)	0.985*** (0.0326)	0.955*** (0.0309)

Standard errors in parentheses
 *** p<0.01, ** p<0.05, * p<0.1

Table S2.S continued

VARIABLES	(17) reput_4	(18) reput_5	(19) pcf_rep	(20) lvademp	(21) dlemp	(22) growth1	(23) growth3	(24) pcf_perf
supbuy	0.287 (0.646)	0.392 (0.645)	0.281 (0.798)	0 (0)	-0.541* (0.277)	-0.551 (0.785)	1.573 (2.537)	0 (0)
samesup	-0.0995 (0.162)	-0.0905 (0.178)	-0.0443 (0.156)	-1.434** (0.559)	-0.284 (0.185)	-1.043*** (0.318)	-0.802** (0.394)	-0.629** (0.284)
samecus	-0.105 (0.112)	0.118** (0.0493)	0.0414 (0.0863)	-0.946 (0.684)	0.0868 (0.139)	-0.624*** (0.209)	0.284 (0.451)	-0.0639 (0.219)
same_sec	-0.0118 (0.0340)	0.0208 (0.0316)	-0.00343 (0.0342)	-0.320 (0.291)	-0.0704 (0.0618)	-0.0915 (0.114)	-0.0903 (0.212)	-0.239 (0.167)
ldist	-0.00328 (0.00301)	-0.00496 (0.00487)	0.00566 (0.00701)	-0.0662* (0.0399)	-0.0177 (0.0113)	-0.0526** (0.0251)	-0.0522 (0.0351)	-0.0146 (0.0200)
ad_fmage	-0.000696 (0.000812)	0.00154 (0.00156)	-0.00117 (0.000985)	-0.00498 (0.00781)	0.00111 (0.00216)	0.00861 (0.00650)	0.00458 (0.00745)	0.00600 (0.00460)
ad_meduc	-0.00143 (0.00704)	0.00724 (0.00944)	0.00139 (0.00863)	0.0468 (0.0477)	-0.00464 (0.0116)	-0.0332 (0.0229)	-0.0201 (0.0267)	0.0120 (0.0251)
ad_mexper	-0.000772 (0.000947)	-0.00118 (0.00144)	0.000485 (0.00169)	-0.00728 (0.00579)	0.000767 (0.00132)	0.00304 (0.00695)	-0.00385 (0.00580)	-0.00181 (0.00314)
ad_mfemale	0.0157 (0.0387)	0.0262 (0.0461)	0.0370 (0.0481)	0.376 (0.582)	-0.00715 (0.0613)	-0.161 (0.134)	0.0561 (0.274)	-0.138 (0.0959)
ad_lemp	-0.0267*** (0.00876)	-0.0311** (0.0133)	-0.0111 (0.0136)	0.00746 (0.110)	0.0654** (0.0258)	0.0906 (0.0709)	0.102 (0.114)	0.0611 (0.0599)
secdist	0.00247 (0.00628)	0.00173 (0.00628)	0.00412 (0.00674)	0.0382 (0.0511)	0.00321 (0.00845)	0.00876 (0.0259)	0.00547 (0.0315)	0.0307 (0.0217)
seclink	-0.00581 (0.171)	-0.0456 (0.142)	0.133 (0.118)	-0.244 (0.646)	0.0255 (0.238)	0.315 (0.247)	0.183 (0.451)	0.373 (0.275)
Constant	1.004*** (0.0242)	0.894*** (0.0489)	1.126*** (0.0506)	3.775*** (0.379)	0.716*** (0.0995)	1.523*** (0.290)	2.060*** (0.337)	0.994*** (0.222)

Standard errors in parentheses
 *** p<0.01, ** p<0.05, * p<0.1

Table S2.S continued

VARIABLES	(25) Web	(26) email	(27) reput_D1	(28) reputD_2	(29) reputD_3	(30) reputD_4	(31) reputD_5	(32) pcf_repD
supbuy	0.00413 (0.339)	0.397 (0.366)	-0.476** (0.196)	-0.236 (0.346)	0.285 (0.268)	0.287 (0.361)	0.384 (0.368)	0.377 (0.674)
samesup	-0.131* (0.0718)	-0.156** (0.0742)	-0.0874 (0.0938)	-0.0620 (0.0857)	-0.0617 (0.0897)	-0.0554 (0.0844)	-0.0431 (0.0981)	-0.126 (0.153)
samecus	0.131*** (0.0392)	0.111*** (0.0314)	0.0326 (0.0356)	-0.00390 (0.0449)	-0.0737 (0.0706)	-0.0866 (0.0661)	0.0850** (0.0390)	0.0915 (0.0982)
same_sec	-0.0280 (0.0233)	-0.0729*** (0.0280)	-0.000199 (0.0187)	-0.0330 (0.0240)	-0.00775 (0.0218)	-0.00419 (0.0180)	0.0176 (0.0190)	0.00165 (0.0383)
ldist	-0.00982*** (0.00334)	-0.0156*** (0.00248)	-0.00569*** (0.00177)	-0.00465** (0.00191)	-0.000431 (0.00309)	-0.00284 (0.00223)	-0.00242 (0.00392)	0.00531 (0.00675)
ad_fmage	-0.00224*** (0.000511)	-0.000541 (0.000914)	-0.000663 (0.000546)	0.000383 (0.000691)	0.000436 (0.000803)	-0.000245 (0.000623)	0.00110 (0.00115)	-0.000495 (0.00121)
ad_meduc	-0.00629 (0.00612)	0.0166 (0.0108)	-0.00187 (0.00285)	0.00254 (0.00439)	0.00206 (0.00528)	0.000250 (0.00489)	0.00508 (0.00615)	-0.00423 (0.00882)
ad_mexper	0.000328 (0.00129)	-0.00140** (0.000569)	0.000438 (0.000601)	0.000104 (0.000560)	-0.000965 (0.000596)	-0.000796 (0.000688)	-0.000884 (0.00107)	-0.000556 (0.00186)
ad_mfemale	0.239*** (0.0527)	0.130*** (0.0431)	0.0276 (0.0244)	0.00233 (0.0204)	-0.00531 (0.0228)	0.0115 (0.0258)	0.0190 (0.0293)	0.0657 (0.0552)
ad_lemper	0.0819*** (0.0218)	0.0809*** (0.0227)	0.0121 (0.0101)	-0.00905 (0.00659)	-0.00439 (0.00852)	-0.0177*** (0.00583)	-0.0186** (0.00931)	-0.0166 (0.0154)
secdist	0.000999 (0.00406)	0.00216 (0.00460)	-0.00286 (0.00383)	0.00399 (0.00428)	0.00195 (0.00380)	0.000335 (0.00340)	0.000700 (0.00358)	0.00289 (0.00712)
seclink	0.0359 (0.0691)	0.0587 (0.0755)	0.0207 (0.0753)	0.0473 (0.0788)	0.0514 (0.0805)	-0.00955 (0.0832)	-0.0507 (0.0840)	0.0643 (0.135)
Constant	0.214*** (0.0360)	0.323*** (0.0350)	0.466*** (0.0217)	0.486*** (0.0202)	0.451*** (0.0259)	0.492*** (0.0198)	0.397*** (0.0384)	1.107*** (0.0537)

Standard errors in parentheses
 *** p<0.01, ** p<0.05, * p<0.1

Table S3.S: Results for the baseline specification with interaction terms (similar firm size x network variables) added

VARIABLES	(1)	(2)	(3)	(4)	(5)	(6)	(7)	(8)
	newprod	invdum	anyrd	it	pcf_tech	suprat	htrain	ftrain
Supbuy	0.0165 (0.351)	-0.203 (0.327)	-0.342** (0.141)	0.448 (0.571)	-0.298 (0.237)	-0.0830 (0.0875)	-0.122 (0.263)	0.369 (0.340)
Samesup	-0.100 (0.0773)	-0.177** (0.0826)	-0.175** (0.0720)	-0.277** (0.118)	-0.327** (0.136)	-0.00326 (0.0428)	0.0235 (0.0845)	-0.0235 (0.0621)
Samecus	0.0168 (0.0228)	-0.00395 (0.0341)	0.127*** (0.0370)	0.227*** (0.0631)	0.172* (0.100)	-0.0416 (0.0295)	0.0793** (0.0379)	0.0194 (0.0729)
same_sec	0.00455 (0.0101)	-0.00138 (0.0134)	-0.0133 (0.0185)	-0.0955*** (0.0301)	-0.0299 (0.0309)	0.00208 (0.00619)	-0.0341* (0.0189)	-0.00870 (0.0159)
Ldist	-2.85e-05 (0.00176)	-0.00107 (0.00231)	-0.0116*** (0.00291)	-0.0213*** (0.00513)	-0.0187*** (0.00602)	0.00251 (0.00191)	-0.00783*** (0.00299)	-0.000565 (0.00436)
ad_fmage	0.000119 (0.000283)	0.000256 (0.000368)	0.000364 (0.00103)	-0.00318*** (0.00120)	-0.00102 (0.00134)	-0.000526* (0.000298)	-0.000422 (0.000663)	0.000881 (0.000991)
ad_meduc	0.00575 (0.00615)	0.0410*** (0.0143)	0.00742 (0.00921)	0.0187 (0.0167)	0.0666*** (0.0235)	0.00394 (0.00338)	-0.000371 (0.00572)	-0.0144*** (0.00472)
ad_mexper	-1.79e-06 (0.000289)	-0.000297 (0.000267)	-0.000414 (0.00115)	-3.09e-05 (0.00218)	-0.000118 (0.00240)	0.000262 (0.000591)	-0.00155*** (0.000501)	0.000638 (0.00108)
ad_mfemale	0.00116 (0.00633)	0.0355* (0.0187)	0.0977** (0.0396)	0.435*** (0.0909)	0.241*** (0.0750)	0.0299* (0.0175)	0.0446 (0.0375)	0.0847 (0.0541)
ad_lemp	0.0252*** (0.00956)	0.0549*** (0.0141)	0.0364** (0.0181)	0.163*** (0.0449)	0.203*** (0.0482)	0.0216*** (0.00575)	0.0558*** (0.0179)	0.0788*** (0.0218)
sizdist	0.00314 (0.00234)	0.00374 (0.00350)	-0.00467 (0.00441)	-0.00608 (0.00880)	0.00831 (0.00907)	0.00545*** (0.00150)	-0.00156 (0.00396)	0.00135 (0.00390)
sizlink	0.0812 (0.0713)	0.0957 (0.0813)	-0.0390 (0.0815)	0.0123 (0.142)	0.0712 (0.138)	0.0212 (0.0459)	0.0288 (0.0966)	0.0180 (0.0641)
Constant	0.457*** (0.0177)	0.370*** (0.0296)	0.334*** (0.0362)	0.510*** (0.0689)	0.802*** (0.0703)	0.287*** (0.0162)	0.379*** (0.0356)	0.0946** (0.0391)

Standard errors in parentheses
*** p<0.01, ** p<0.05, * p<0.1

Table S3.S continued

VARIABLES	(9)	(10)	(11)	(12)	(13)	(14)	(15)	(16)
	pcf_hk	directimport	sellcredit	subcont	pcf_cont	reput_1	reput_2	reput_3
supbuy	-0.199 (0.336)	-0.421** (0.173)	-0.434** (0.176)	0.0469 (0.330)	-0.809** (0.379)	-0.703* (0.372)	-0.209 (0.622)	0.558 (0.515)
samesup	0.0508 (0.155)	-0.158** (0.0803)	0.00810 (0.0787)	0.0160 (0.0720)	-8.64e-05 (0.140)	-0.111 (0.166)	-0.0894 (0.171)	-0.0473 (0.147)
samecus	0.164 (0.146)	-0.0511 (0.0425)	-0.0104 (0.0427)	-0.0442 (0.0633)	-0.0514 (0.0978)	0.0757 (0.0568)	0.0301 (0.0705)	-0.109 (0.116)
same_sec	-0.0644* (0.0375)	-0.0299* (0.0157)	-0.00606 (0.0137)	-0.00578 (0.0132)	-0.0460* (0.0279)	-0.00877 (0.0213)	-0.0213 (0.0281)	-0.00305 (0.0193)
ldist	-0.00652 (0.00833)	0.00761** (0.00319)	0.00869** (0.00430)	-0.00813** (0.00403)	0.00779 (0.00945)	-0.00713** (0.00315)	-0.00615** (0.00304)	-0.000492 (0.00327)
ad_fmage	0.000210 (0.00183)	0.000102 (0.000240)	-8.47e-05 (0.000582)	-0.000665 (0.000563)	0.000300 (0.00107)	-0.000857 (0.000726)	0.000383 (0.00106)	0.000530 (0.000943)
ad_meduc	-0.0147 (0.0130)	0.0216* (0.0112)	0.00593 (0.00658)	0.00153 (0.00477)	0.0280 (0.0173)	0.000944 (0.00721)	0.00326 (0.00756)	0.00232 (0.00795)
ad_mexper	-0.000748 (0.00185)	-9.45e-05 (0.000305)	-0.000210 (0.000727)	-0.000397 (0.000633)	-0.000626 (0.00121)	0.000671 (0.000803)	0.000131 (0.000917)	-0.00113 (0.000702)
ad_mfemale	0.204* (0.114)	0.00266 (0.00685)	-0.0164 (0.0126)	0.0109 (0.0382)	-0.00202 (0.0391)	0.0297 (0.0333)	0.00191 (0.0342)	-0.0103 (0.0252)
ad_lemper	0.209*** (0.0527)	0.0685*** (0.0146)	0.00721 (0.00814)	-0.00630 (0.0134)	0.102*** (0.0270)	0.0230 (0.0161)	-0.0128 (0.0120)	-0.00365 (0.0125)
sizdist	0.00333 (0.00868)	0.00426 (0.00367)	0.00365* (0.00217)	-0.00403 (0.00348)	0.00587 (0.00592)	0.00220 (0.00551)	0.000319 (0.00450)	0.000895 (0.00373)
sizlink	0.108 (0.177)	0.0586 (0.0846)	0.0326 (0.0916)	0.120 (0.0752)	0.128 (0.142)	-0.167 (0.167)	0.0267 (0.198)	0.0428 (0.144)
Constant	0.736*** (0.0851)	0.354*** (0.0299)	0.414*** (0.0305)	0.225*** (0.0444)	0.896*** (0.0585)	0.948*** (0.0307)	0.980*** (0.0328)	0.952*** (0.0316)

Standard errors in parentheses
 *** p<0.01, ** p<0.05, * p<0.1

Table S3.S continued

VARIABLES	(17) reput_4	(18) reput_5	(19) pcf_rep	(20) lvademp	(21) dlemp	(22) growth1	(23) growth3	(24) pcf_perf
supbuy	0.281 (0.614)	0.369 (0.637)	0.342 (0.784)	0 (0)	-0.536** (0.222)	-0.427 (0.674)	1.637 (2.479)	0 (0)
samesup	-0.104 (0.142)	-0.103 (0.152)	-0.00129 (0.158)	-1.579*** (0.486)	-0.245** (0.120)	-0.871** (0.351)	-0.745* (0.401)	-0.486** (0.212)
samecus	-0.105 (0.113)	0.116** (0.0515)	0.0534 (0.0881)	-0.967 (0.682)	0.102 (0.146)	-0.572*** (0.201)	0.295 (0.445)	-0.0104 (0.228)
same_sec	-0.00128 (0.0186)	0.0275* (0.0164)	0.0162 (0.0189)	-0.127 (0.157)	-0.0553 (0.0393)	-0.0454 (0.0681)	-0.0611 (0.132)	-0.0760 (0.0863)
ldist	-0.00318 (0.00282)	-0.00529 (0.00473)	0.00539 (0.00705)	-0.0536 (0.0374)	-0.0171 (0.0109)	-0.0493** (0.0232)	-0.0491 (0.0334)	-0.0106 (0.0180)
ad_fmage	-0.000696 (0.000812)	0.00154 (0.00156)	-0.00117 (0.000984)	-0.00484 (0.00780)	0.00112 (0.00216)	0.00862 (0.00651)	0.00459 (0.00746)	0.00602 (0.00458)
ad_meduc	-0.00140 (0.00705)	0.00733 (0.00940)	0.00155 (0.00863)	0.0423 (0.0469)	-0.00472 (0.0117)	-0.0337 (0.0228)	-0.0207 (0.0268)	0.0115 (0.0252)
ad_mexper	-0.000771 (0.000949)	-0.00118 (0.00144)	0.000492 (0.00169)	-0.00734 (0.00577)	0.000762 (0.00132)	0.00303 (0.00696)	-0.00384 (0.00580)	-0.00186 (0.00313)
ad_mfemale	0.0157 (0.0387)	0.0262 (0.0462)	0.0370 (0.0481)	0.369 (0.581)	-0.00735 (0.0615)	-0.161 (0.134)	0.0564 (0.275)	-0.137 (0.0962)
ad_lemp	-0.0257*** (0.00946)	-0.0286** (0.0142)	-0.00741 (0.0141)	-0.0289 (0.110)	0.0637** (0.0262)	0.0797 (0.0739)	0.0906 (0.119)	0.0626 (0.0624)
sizdist	0.00162 (0.00398)	0.00423 (0.00378)	0.00595 (0.00518)	-0.0566** (0.0287)	-0.00242 (0.00573)	-0.0165 (0.0157)	-0.0188 (0.0236)	0.00228 (0.0148)
sizlink	-0.00144 (0.155)	-0.0345 (0.151)	0.0535 (0.139)	-0.260 (0.525)	-0.118 (0.140)	-0.138 (0.272)	0.0733 (0.539)	0.0163 (0.239)
Constant	1.002*** (0.0257)	0.890*** (0.0492)	1.119*** (0.0500)	3.797*** (0.386)	0.717*** (0.0992)	1.531*** (0.295)	2.070*** (0.337)	0.971*** (0.220)

Standard errors in parentheses
 *** p<0.01, ** p<0.05, * p<0.1

Table S3.S continued

VARIABLES	(25)	(26)	(27)	(28)	(29)	(30)	(31)	(32)
	web	email	reput_D1	reputD_2	reputD_3	reputD_4	reputD_5	pcf_repD
supbuy	0.0194 (0.329)	0.419 (0.361)	-0.460** (0.185)	-0.219 (0.331)	0.308 (0.262)	0.282 (0.343)	0.359 (0.365)	0.407 (0.656)
samesup	-0.123* (0.0675)	-0.137** (0.0653)	-0.0510 (0.0884)	-0.0526 (0.0870)	-0.0479 (0.0815)	-0.0570 (0.0769)	-0.0680 (0.0804)	-0.109 (0.146)
samecus	0.132*** (0.0390)	0.117*** (0.0337)	0.0451 (0.0360)	-0.000960 (0.0464)	-0.0701 (0.0689)	-0.0865 (0.0655)	0.0780** (0.0394)	0.0961 (0.101)
same_sec	-0.0232 (0.0150)	-0.0628*** (0.0192)	-0.0122 (0.0139)	-0.0152 (0.0154)	0.00139 (0.0118)	-0.00288 (0.0113)	0.0198** (0.00980)	0.0150 (0.0231)
ldist	-0.00952*** (0.00327)	-0.0147*** (0.00227)	-0.00613*** (0.00169)	-0.00419** (0.00190)	-0.000521 (0.00301)	-0.00287 (0.00217)	-0.00275 (0.00386)	0.00472 (0.00674)
ad_fmage	-0.00224*** (0.000509)	-0.000535 (0.000914)	-0.000666 (0.000546)	0.000387 (0.000691)	0.000437 (0.000804)	-0.000245 (0.000623)	0.00109 (0.00115)	-0.000497 (0.00121)
ad_meduc	-0.00632 (0.00612)	0.0165 (0.0108)	-0.00184 (0.00283)	0.00253 (0.00439)	0.00212 (0.00528)	0.000260 (0.00489)	0.00515 (0.00614)	-0.00405 (0.00882)
ad_mexper	0.000328 (0.00129)	-0.00141** (0.000567)	0.000438 (0.000600)	0.000105 (0.000560)	-0.000962 (0.000596)	-0.000796 (0.000689)	-0.000883 (0.00108)	-0.000550 (0.00186)
ad_mfemale	0.239*** (0.0528)	0.130*** (0.0431)	0.0277 (0.0244)	0.00223 (0.0204)	-0.00533 (0.0228)	0.0115 (0.0258)	0.0190 (0.0293)	0.0658 (0.0552)
ad_lemg	0.0811*** (0.0234)	0.0779*** (0.0241)	0.0123 (0.0104)	-0.00887 (0.00704)	-0.00280 (0.00915)	-0.0174*** (0.00637)	-0.0166* (0.00991)	-0.0121 (0.0163)
sizdist	-0.00140 (0.00434)	-0.00502 (0.00500)	0.000652 (0.00306)	0.000215 (0.00224)	0.00254 (0.00229)	0.000548 (0.00233)	0.00332 (0.00230)	0.00731 (0.00547)
sizlink	0.0295 (0.0756)	0.0101 (0.0932)	-0.0930 (0.0893)	0.0281 (0.107)	0.0310 (0.0843)	-0.0114 (0.0876)	0.0108 (0.0831)	0.0441 (0.152)
Constant	0.214*** (0.0379)	0.325*** (0.0368)	0.468*** (0.0219)	0.483*** (0.0204)	0.448*** (0.0264)	0.492*** (0.0209)	0.394*** (0.0387)	1.100*** (0.0532)

Standard errors in parentheses
 *** p<0.01, ** p<0.05, * p<0.1

Table S4.S: Results for the baseline specification with a dummy variable for location in the same town added.

VARIABLES	(1) newprod	(2) invdum	(3) anyrd	(4) it	(5) pcf_tech	(6) suprat	(7) htrain	(8) ftrain
supbuy	0.0148 (0.351)	-0.206 (0.325)	-0.341** (0.141)	0.450 (0.571)	-0.304 (0.230)	-0.0872 (0.0886)	-0.122 (0.263)	0.365 (0.349)
samesup	-0.0800 (0.0740)	-0.154* (0.0790)	-0.182*** (0.0645)	-0.271** (0.109)	-0.308** (0.130)	0.000282 (0.0439)	0.0316 (0.0844)	-0.0175 (0.0543)
samecus	0.0243 (0.0221)	0.00623 (0.0336)	0.127*** (0.0347)	0.231*** (0.0608)	0.183* (0.101)	-0.0375 (0.0286)	0.0837** (0.0378)	0.0282 (0.0704)
same_sec	0.00459 (0.0101)	-0.00127 (0.0134)	-0.0132 (0.0185)	-0.0955*** (0.0303)	-0.0298 (0.0311)	0.00218 (0.00622)	-0.0341* (0.0190)	-0.00860 (0.0159)
ldist	0.00220 (0.00489)	-0.00557 (0.00775)	-0.0333*** (0.0107)	-0.0303 (0.0237)	-0.0465* (0.0254)	-0.0132 (0.00810)	-0.0143 (0.0121)	-0.0422** (0.0176)
ad_fmage	0.000123 (0.000284)	0.000252 (0.000366)	0.000333 (0.00102)	-0.00319*** (0.00120)	-0.00105 (0.00133)	-0.000544* (0.000294)	-0.000431 (0.000661)	0.000825 (0.000970)
ad_meduc	0.00555 (0.00617)	0.0413*** (0.0146)	0.00900 (0.00923)	0.0195 (0.0168)	0.0683*** (0.0236)	0.00494 (0.00343)	0.000108 (0.00594)	-0.0115*** (0.00447)
ad_mexper	2.37e-06 (0.000288)	-0.000322 (0.000271)	-0.000497 (0.00120)	-6.26e-05 (0.00223)	-0.000238 (0.00248)	0.000188 (0.000587)	-0.00158*** (0.000493)	0.000459 (0.00104)
ad_mfemale	0.00137 (0.00625)	0.0348* (0.0189)	0.0950** (0.0396)	0.434*** (0.0916)	0.237*** (0.0764)	0.0277 (0.0178)	0.0438 (0.0375)	0.0795 (0.0539)
ad_lemp	0.0234*** (0.00905)	0.0519*** (0.0146)	0.0369** (0.0174)	0.166*** (0.0422)	0.194*** (0.0455)	0.0163*** (0.00580)	0.0560*** (0.0172)	0.0731*** (0.0208)
sametown	0.0118 (0.0297)	-0.0321 (0.0543)	-0.136** (0.0674)	-0.0534 (0.143)	-0.187 (0.158)	-0.106** (0.0499)	-0.0405 (0.0729)	-0.270** (0.121)
Constant	0.448*** (0.0318)	0.405*** (0.0568)	0.464*** (0.0815)	0.557*** (0.164)	0.992*** (0.175)	0.396*** (0.0529)	0.418*** (0.0834)	0.361*** (0.118)

Standard errors in parentheses
*** p<0.01, ** p<0.05, * p<0.1

Table S4.S continued

VARIABLES	(9)	(10)	(11)	(12)	(13)	(14)	(15)	(16)
	pcf_hk	directimport	sellcredit	subcont	pcf_cont	reput_1	reput_2	reput_3
supbuy	-0.205 (0.351)	-0.425** (0.175)	-0.435** (0.176)	0.0485 (0.329)	-0.817** (0.372)	-0.704* (0.373)	-0.208 (0.626)	0.559 (0.518)
samesup	0.0768 (0.147)	-0.144* (0.0760)	0.0147 (0.0788)	0.0482 (0.0810)	0.0351 (0.134)	-0.154 (0.166)	-0.0836 (0.164)	-0.0376 (0.145)
samecus	0.185 (0.141)	-0.0417 (0.0419)	-0.00873 (0.0437)	-0.0302 (0.0649)	-0.0261 (0.101)	0.0581 (0.0558)	0.0300 (0.0662)	-0.107 (0.117)
same_sec	-0.0642* (0.0377)	-0.0298* (0.0157)	-0.00604 (0.0136)	-0.00569 (0.0131)	-0.0455 (0.0284)	-0.00888 (0.0213)	-0.0213 (0.0281)	-0.00307 (0.0194)
ldist	-0.0669** (0.0320)	-0.0152 (0.00972)	0.0158 (0.0166)	-0.0130 (0.0108)	-0.0608* (0.0325)	-0.00770 (0.0124)	0.0105 (0.0190)	0.0157 (0.0186)
ad_fmage	0.000134 (0.00181)	7.33e-05 (0.000250)	-7.32e-05 (0.000582)	-0.000673 (0.000561)	0.000226 (0.00105)	-0.000855 (0.000721)	0.000405 (0.00106)	0.000552 (0.000952)
ad_meduc	-0.0105 (0.0130)	0.0231** (0.0111)	0.00537 (0.00635)	0.00195 (0.00493)	0.0328* (0.0174)	0.000958 (0.00761)	0.00210 (0.00757)	0.00117 (0.00781)
ad_mexper	-0.00101 (0.00181)	-0.000198 (0.000295)	-0.000184 (0.000723)	-0.000414 (0.000627)	-0.000908 (0.00122)	0.000669 (0.000817)	0.000201 (0.000901)	-0.00107 (0.000698)
ad_mfemale	0.196* (0.115)	-0.000363 (0.00730)	-0.0156 (0.0127)	0.0104 (0.0382)	-0.0108 (0.0384)	0.0297 (0.0332)	0.00399 (0.0337)	-0.00830 (0.0244)
ad_lemper	0.200*** (0.0499)	0.0631*** (0.0147)	0.00573 (0.00790)	-0.00447 (0.0127)	0.0899*** (0.0261)	0.0218 (0.0158)	-0.0111 (0.0113)	-0.00237 (0.0116)
sametown	-0.392* (0.211)	-0.151** (0.0747)	0.0432 (0.101)	-0.0278 (0.0632)	-0.448** (0.218)	-0.00566 (0.0797)	0.107 (0.117)	0.104 (0.109)
Constant	1.123*** (0.220)	0.506*** (0.0714)	0.375*** (0.105)	0.249*** (0.0780)	1.340*** (0.214)	0.955*** (0.0852)	0.875*** (0.130)	0.851*** (0.124)

Standard errors in parentheses

*** p<0.01, ** p<0.05, * p<0.1

Table S4.S continued

VARIABLES	(17) reput_4	(18) reput_5	(19) pcf_rep	(20) lvademp	(21) dlemp	(22) growth1	(23) growth3	(24) pcf_perf
supbuy	0.280 (0.614)	0.368 (0.638)	0.336 (0.774)	0 (0)	-0.533** (0.221)	-0.468 (0.651)	1.627 (2.462)	0 (0)
samesup	-0.105 (0.141)	-0.114 (0.164)	0.0117 (0.151)	-1.654*** (0.452)	-0.278** (0.122)	-0.891*** (0.333)	-0.703** (0.349)	-0.467** (0.200)
samecus	-0.107 (0.112)	0.109** (0.0478)	0.0640 (0.0885)	-0.990 (0.659)	0.0883 (0.140)	-0.562*** (0.203)	0.315 (0.445)	-0.00189 (0.217)
same_sec	-0.00130 (0.0186)	0.0275* (0.0164)	0.0164 (0.0187)	-0.135 (0.156)	-0.0557 (0.0392)	-0.0462 (0.0677)	-0.0615 (0.132)	-0.0737 (0.0862)
ldist	0.00532 (0.0183)	0.0141 (0.0229)	-0.0296 (0.0281)	-0.0376 (0.104)	-0.00877 (0.0453)	-0.176** (0.0766)	-0.108 (0.0973)	-0.0595 (0.0577)
ad_fmage	-0.000684 (0.000807)	0.00157 (0.00157)	-0.00121 (0.000976)	-0.00491 (0.00780)	0.00113 (0.00215)	0.00856 (0.00657)	0.00454 (0.00742)	0.00600 (0.00455)
ad_meduc	-0.00202 (0.00686)	0.00592 (0.00920)	0.00387 (0.00847)	0.0442 (0.0482)	-0.00531 (0.0111)	-0.0235 (0.0238)	-0.0153 (0.0269)	0.0158 (0.0260)
ad_mexper	-0.000737 (0.000935)	-0.00110 (0.00142)	0.000334 (0.00174)	-0.00721 (0.00587)	0.000805 (0.00131)	0.00248 (0.00707)	-0.00410 (0.00564)	-0.00205 (0.00304)
ad_mfemale	0.0167 (0.0385)	0.0285 (0.0459)	0.0324 (0.0481)	0.379 (0.587)	-0.00632 (0.0617)	-0.178 (0.132)	0.0487 (0.275)	-0.147 (0.0995)
ad_lempe	-0.0257*** (0.00862)	-0.0289** (0.0133)	-0.0153 (0.0135)	0.0104 (0.115)	0.0662** (0.0272)	0.0747 (0.0705)	0.0944 (0.116)	0.0556 (0.0599)
sametown	0.0537 (0.109)	0.122 (0.129)	-0.231 (0.169)	0.158 (0.615)	0.0559 (0.257)	-0.818* (0.428)	-0.369 (0.556)	-0.333 (0.301)
Constant	0.950*** (0.120)	0.773*** (0.148)	1.351*** (0.178)	3.600*** (0.725)	0.660** (0.281)	2.313*** (0.566)	2.414*** (0.620)	1.289*** (0.394)

Standard errors in parentheses

*** p<0.01, ** p<0.05, * p<0.1

Table S4.S continued

VARIABLES	(25) web	(26) email	(27) reput_D1	(28) reputD_2	(29) reputD_3	(30) reputD_4	(31) reputD_5	(32) pcf_repD
supbuy	0.0199 (0.330)	0.421 (0.361)	-0.460** (0.185)	-0.219 (0.334)	0.308 (0.265)	0.283 (0.343)	0.359 (0.366)	0.403 (0.652)
samesup	-0.116* (0.0619)	-0.132** (0.0637)	-0.0749 (0.0882)	-0.0461 (0.0822)	-0.0419 (0.0810)	-0.0604 (0.0741)	-0.0675 (0.0841)	-0.100 (0.140)
samecus	0.135*** (0.0374)	0.120*** (0.0298)	0.0348 (0.0362)	0.000112 (0.0447)	-0.0704 (0.0704)	-0.0892 (0.0654)	0.0753** (0.0382)	0.100 (0.102)
same_sec	-0.0232 (0.0151)	-0.0628*** (0.0192)	-0.0122 (0.0139)	-0.0152 (0.0154)	0.00136 (0.0118)	-0.00291 (0.0113)	0.0197** (0.00988)	0.0151 (0.0230)
ldist	-0.0114 (0.0161)	-0.0223** (0.0101)	-0.00318 (0.00891)	0.00653 (0.0114)	0.0180 (0.0149)	0.00552 (0.0123)	0.0171 (0.0163)	0.00181 (0.0294)
ad_fmage	-0.00225*** (0.000512)	-0.000548 (0.000914)	-0.000661 (0.000544)	0.000401 (0.000693)	0.000463 (0.000807)	-0.000234 (0.000621)	0.00112 (0.00115)	-0.000497 (0.00121)
ad_meduc	-0.00617 (0.00618)	0.0171 (0.0110)	-0.00205 (0.00309)	0.00178 (0.00439)	0.000791 (0.00522)	-0.000331 (0.00478)	0.00372 (0.00602)	-0.00397 (0.00851)
ad_mexper	0.000321 (0.00131)	-0.00143** (0.000584)	0.000451 (0.000604)	0.000151 (0.000546)	-0.000886 (0.000598)	-0.000760 (0.000676)	-0.000802 (0.00105)	-0.000572 (0.00187)
ad_mfemale	0.239*** (0.0532)	0.129*** (0.0433)	0.0281 (0.0244)	0.00356 (0.0202)	-0.00308 (0.0223)	0.0125 (0.0258)	0.0214 (0.0292)	0.0652 (0.0554)
ad_lemp	0.0817*** (0.0218)	0.0801*** (0.0228)	0.0124 (0.0101)	-0.00778 (0.00647)	-0.00225 (0.00844)	-0.0167*** (0.00577)	-0.0163* (0.00939)	-0.0171 (0.0154)
sametown	-0.0112 (0.0987)	-0.0448 (0.0597)	0.0184 (0.0539)	0.0691 (0.0678)	0.118 (0.0856)	0.0538 (0.0701)	0.126 (0.0918)	-0.0248 (0.172)
Constant	0.225** (0.110)	0.365*** (0.0696)	0.450*** (0.0613)	0.416*** (0.0760)	0.335*** (0.0955)	0.439*** (0.0813)	0.273*** (0.106)	1.130*** (0.186)

Standard errors in parentheses
 *** p<0.01, ** p<0.05, * p<0.1

Table S5.S: Results for an alternative specification in which a single dummy variable for connectedness (*anylink*) replaces the three trading relationship dummies in the baseline specification

VARIABLES	(1) Newprod	(2) invdum	(3) anyrd	(4) it	(5) pcf_tech	(6) suprat	(7) htrain	(8) ftrain
anylink	0.00393 (0.0227)	-0.0278 (0.0295)	0.0580 (0.0382)	0.130** (0.0597)	0.0795 (0.0914)	-0.0325 (0.0254)	0.0719** (0.0318)	0.0147 (0.0611)
same_sec	0.00407 (0.0102)	-0.00218 (0.0133)	-0.0151 (0.0186)	-0.0982*** (0.0302)	-0.0325 (0.0312)	0.00232 (0.00624)	-0.0344* (0.0189)	-0.00885 (0.0160)
ldist	0.000432 (0.00165)	-0.000509 (0.00221)	-0.0120*** (0.00301)	-0.0218*** (0.00530)	-0.0173*** (0.00599)	0.00318 (0.00195)	-0.00799** (0.00314)	-0.000379 (0.00434)
ad_fmage	0.000123 (0.000283)	0.000263 (0.000368)	0.000370 (0.00104)	-0.00317*** (0.00120)	-0.00100 (0.00134)	-0.000523* (0.000299)	-0.000422 (0.000663)	0.000881 (0.000992)
ad_meduc	0.00565 (0.00616)	0.0409*** (0.0144)	0.00750 (0.00929)	0.0188 (0.0167)	0.0663*** (0.0236)	0.00382 (0.00339)	-0.000349 (0.00577)	-0.0145*** (0.00474)
ad_mexper	-4.12e-06 (0.000287)	-0.000299 (0.000265)	-0.000408 (0.00116)	-2.31e-05 (0.00218)	-0.000120 (0.00240)	0.000258 (0.000598)	-0.00155*** (0.000500)	0.000637 (0.00108)
ad_mfemale	0.00137 (0.00630)	0.0358* (0.0187)	0.0985** (0.0396)	0.436*** (0.0909)	0.242*** (0.0752)	0.0297* (0.0176)	0.0447 (0.0374)	0.0847 (0.0541)
ad_lemp	0.0232** (0.00912)	0.0525*** (0.0143)	0.0396** (0.0175)	0.167*** (0.0421)	0.198*** (0.0457)	0.0182*** (0.00569)	0.0567*** (0.0170)	0.0780*** (0.0205)
Constant	0.460*** (0.0174)	0.373*** (0.0302)	0.329*** (0.0357)	0.503*** (0.0660)	0.807*** (0.0687)	0.292*** (0.0158)	0.378*** (0.0345)	0.0956** (0.0381)

Standard errors in parentheses
 *** p<0.01, ** p<0.05, * p<0.1

Table S5.S continued

VARIABLES	(9)	(10)	(11)	(12)	(13)	(14)	(15)	(16)
	pcf_hk	directimport	sellcredit	subcont	pcf_cont	reput_1	reput_2	reput_3
anylink	0.154 (0.120)	-0.0676* (0.0378)	-0.00467 (0.0365)	-0.0138 (0.0540)	-0.0276 (0.0810)	0.0122 (0.0566)	0.00939 (0.0629)	-0.0862 (0.0940)
same_sec	-0.0650* (0.0374)	-0.0305* (0.0157)	-0.00597 (0.0137)	-0.00526 (0.0130)	-0.0456 (0.0279)	-0.0102 (0.0212)	-0.0219 (0.0282)	-0.00255 (0.0192)
ldist	-0.00606 (0.00848)	0.00820*** (0.00314)	0.00915** (0.00422)	-0.00872** (0.00415)	0.00852 (0.00923)	-0.00670** (0.00305)	-0.00604** (0.00308)	-0.000429 (0.00322)
ad_fmage	0.000215 (0.00183)	0.000108 (0.000239)	-8.13e-05 (0.000582)	-0.000670 (0.000563)	0.000304 (0.00107)	-0.000847 (0.000722)	0.000386 (0.00106)	0.000526 (0.000943)
ad_meduc	-0.0148 (0.0131)	0.0214* (0.0112)	0.00583 (0.00657)	0.00166 (0.00477)	0.0278 (0.0173)	0.000845 (0.00728)	0.00323 (0.00755)	0.00232 (0.00795)
ad_mexper	-0.000749 (0.00185)	-9.66e-05 (0.000305)	-0.000212 (0.000727)	-0.000397 (0.000633)	-0.000630 (0.00121)	0.000675 (0.000804)	0.000132 (0.000917)	-0.00114 (0.000702)
ad_mfemale	0.204* (0.114)	0.00284 (0.00684)	-0.0165 (0.0126)	0.0107 (0.0382)	-0.00219 (0.0391)	0.0303 (0.0333)	0.00219 (0.0341)	-0.0105 (0.0252)
ad_lemper	0.207*** (0.0499)	0.0659*** (0.0145)	0.00494 (0.00782)	-0.00403 (0.0123)	0.0977*** (0.0264)	0.0221 (0.0157)	-0.0129 (0.0113)	-0.00431 (0.0115)
Constant	0.738*** (0.0821)	0.357*** (0.0297)	0.417*** (0.0308)	0.223*** (0.0433)	0.901*** (0.0582)	0.948*** (0.0304)	0.980*** (0.0324)	0.953*** (0.0306)

Standard errors in parentheses

*** p<0.01, ** p<0.05, * p<0.1

Table S5.S continued

VARIABLES	(17) reput_4	(18) reput_5	(19) pcf_rep	(20) lvademp	(21) dlemp	(22) growth1	(23) growth3	(24) pcf_perf
anylink	-0.102 (0.0897)	0.0691 (0.0494)	0.0513 (0.0742)	-1.235** (0.496)	0.00643 (0.108)	-0.660*** (0.196)	-0.000732 (0.332)	-0.202 (0.167)
same_sec	-0.00121 (0.0184)	0.0264 (0.0166)	0.0160 (0.0188)	-0.141 (0.155)	-0.0578 (0.0399)	-0.0484 (0.0683)	-0.0709 (0.134)	-0.0800 (0.0878)
ldist	-0.00298 (0.00283)	-0.00462 (0.00473)	0.00617 (0.00705)	-0.0604 (0.0386)	-0.0171 (0.0110)	-0.0512** (0.0240)	-0.0505 (0.0344)	-0.00942 (0.0185)
ad_fmage	-0.000696 (0.000812)	0.00155 (0.00156)	-0.00117 (0.000985)	-0.00489 (0.00781)	0.00113 (0.00216)	0.00862 (0.00651)	0.00462 (0.00746)	0.00605 (0.00458)
ad_meduc	-0.00144 (0.00709)	0.00719 (0.00945)	0.00139 (0.00864)	0.0458 (0.0473)	-0.00477 (0.0116)	-0.0333 (0.0228)	-0.0203 (0.0267)	0.0111 (0.0250)
ad_mexper	-0.000773 (0.000949)	-0.00118 (0.00144)	0.000487 (0.00169)	-0.00731 (0.00577)	0.000772 (0.00132)	0.00303 (0.00695)	-0.00385 (0.00580)	-0.00185 (0.00313)
ad_mfemale	0.0156 (0.0388)	0.0266 (0.0461)	0.0369 (0.0481)	0.378 (0.581)	-0.00612 (0.0612)	-0.161 (0.134)	0.0592 (0.274)	-0.134 (0.0954)
ad_lemp	-0.0267*** (0.00873)	-0.0310** (0.0132)	-0.0111 (0.0136)	0.00792 (0.110)	0.0656** (0.0259)	0.0909 (0.0709)	0.103 (0.114)	0.0619 (0.0600)
Constant	1.003*** (0.0243)	0.893*** (0.0487)	1.123*** (0.0500)	3.747*** (0.377)	0.713*** (0.0972)	1.516*** (0.288)	2.050*** (0.328)	0.967*** (0.212)

Standard errors in parentheses
 *** p<0.01, ** p<0.05, * p<0.1

Table S5.S continued

VARIABLES	(25) web	(26) email	(27) reput_D1	(28) reputD_2	(29) reputD_3	(30) reputD_4	(31) reputD_5	(32) pcf_repD
anylink	0.0864** (0.0349)	0.0722** (0.0303)	0.0110 (0.0340)	-0.00828 (0.0396)	-0.0597 (0.0560)	-0.0799 (0.0536)	0.0512 (0.0344)	0.0621 (0.0842)
same_sec	-0.0245 (0.0151)	-0.0640*** (0.0192)	-0.0129 (0.0138)	-0.0154 (0.0155)	0.00163 (0.0117)	-0.00268 (0.0113)	0.0191* (0.00991)	0.0140 (0.0231)
ldist	-0.00957*** (0.00332)	-0.0152*** (0.00235)	-0.00596*** (0.00170)	-0.00414** (0.00190)	-0.000221 (0.00301)	-0.00282 (0.00220)	-0.00225 (0.00387)	0.00576 (0.00672)
ad_fmage	-0.00224*** (0.000512)	-0.000535 (0.000917)	-0.000661 (0.000545)	0.000388 (0.000691)	0.000437 (0.000803)	-0.000247 (0.000622)	0.00110 (0.00115)	-0.000489 (0.00121)
ad_meduc	-0.00634 (0.00613)	0.0165 (0.0108)	-0.00188 (0.00286)	0.00251 (0.00439)	0.00207 (0.00528)	0.000260 (0.00491)	0.00505 (0.00615)	-0.00426 (0.00881)
ad_mexper	0.000331 (0.00129)	-0.00140** (0.000569)	0.000441 (0.000601)	0.000105 (0.000560)	-0.000965 (0.000597)	-0.000796 (0.000688)	-0.000884 (0.00107)	-0.000554 (0.00186)
ad_mfemale	0.240*** (0.0528)	0.130*** (0.0431)	0.0280 (0.0244)	0.00235 (0.0203)	-0.00547 (0.0229)	0.0113 (0.0259)	0.0193 (0.0292)	0.0661 (0.0552)
ad_lemper	0.0820*** (0.0218)	0.0810*** (0.0227)	0.0122 (0.0101)	-0.00901 (0.00658)	-0.00441 (0.00852)	-0.0177*** (0.00582)	-0.0185** (0.00929)	-0.0165 (0.0154)
Constant	0.213*** (0.0364)	0.321*** (0.0353)	0.467*** (0.0214)	0.483*** (0.0201)	0.450*** (0.0258)	0.492*** (0.0201)	0.396*** (0.0383)	1.105*** (0.0531)

Standard errors in parentheses

*** p<0.01, ** p<0.05, * p<0.1

Table S6.S: Results for the baseline specification with the geographical distance variable omitted

VARIABLES	(1) newprod	(2) invdum	(3) anyrd	(4) it	(5) pcf_tech	(6) suprat	(7) htrain	(8) ftrain
supbuy	0.0135 (0.350)	-0.203 (0.326)	-0.301** (0.122)	0.520 (0.543)	-0.247 (0.198)	-0.0958 (0.0877)	-0.0965 (0.263)	0.370 (0.342)
samesup	-0.0810 (0.0731)	-0.153* (0.0784)	-0.145** (0.0617)	-0.206* (0.106)	-0.256** (0.127)	-0.00965 (0.0439)	0.0552 (0.0839)	-0.0183 (0.0521)
samecus	0.0244 (0.0224)	0.00572 (0.0343)	0.130*** (0.0347)	0.241*** (0.0601)	0.188* (0.101)	-0.0420 (0.0288)	0.0868** (0.0366)	0.0212 (0.0709)
same_sec	0.00462 (0.0101)	-0.00131 (0.0134)	-0.0138 (0.0185)	-0.0963*** (0.0299)	-0.0307 (0.0311)	0.00222 (0.00627)	-0.0344* (0.0189)	-0.00870 (0.0159)
ad_fmage	0.000122 (0.000281)	0.000257 (0.000370)	0.000346 (0.00101)	-0.00323*** (0.00123)	-0.00104 (0.00132)	-0.000515* (0.000303)	-0.000440 (0.000640)	0.000881 (0.000998)
ad_meduc	0.00582 (0.00632)	0.0406*** (0.0144)	0.00240 (0.00895)	0.00948 (0.0167)	0.0592** (0.0230)	0.00516 (0.00339)	-0.00374 (0.00561)	-0.0146*** (0.00464)
ad_mexper	-2.91e-06 (0.000287)	-0.000304 (0.000266)	-0.000468 (0.00112)	-0.000150 (0.00213)	-0.000218 (0.00234)	0.000276 (0.000598)	-0.00160*** (0.000508)	0.000634 (0.00108)
ad_mfemale	0.000903 (0.00631)	0.0358* (0.0190)	0.106*** (0.0394)	0.449*** (0.0901)	0.252*** (0.0758)	0.0277 (0.0176)	0.0497 (0.0375)	0.0849 (0.0543)
ad_lemph	0.0231** (0.00914)	0.0525*** (0.0143)	0.0404** (0.0176)	0.169*** (0.0424)	0.199*** (0.0457)	0.0179*** (0.00572)	0.0574*** (0.0170)	0.0780*** (0.0205)
Constant	0.462*** (0.0170)	0.371*** (0.0292)	0.281*** (0.0351)	0.418*** (0.0647)	0.738*** (0.0620)	0.304*** (0.0148)	0.346*** (0.0336)	0.0941*** (0.0316)

Standard errors in parentheses

*** p<0.01, ** p<0.05, * p<0.1

Table S6.S continued

VARIABLES	(9)	(10)	(11)	(12)	(13)	(14)	(15)	(16)
	pcf_hk	directimport	sellcredit	subcont	pcf_cont	reput_1	reput_2	reput_3
supbuy	-0.182 (0.337)	-0.448** (0.183)	-0.464** (0.188)	0.0753 (0.316)	-0.839** (0.400)	-0.683* (0.367)	-0.190 (0.612)	0.559 (0.515)
samesup	0.0918 (0.145)	-0.169** (0.0784)	-0.0125 (0.0790)	0.0743 (0.0807)	0.00438 (0.138)	-0.134 (0.165)	-0.0645 (0.162)	-0.0357 (0.145)
samecus	0.177 (0.140)	-0.0501 (0.0434)	-0.0126 (0.0451)	-0.0268 (0.0653)	-0.0431 (0.101)	0.0617 (0.0559)	0.0362 (0.0673)	-0.104 (0.116)
same_sec	-0.0646* (0.0374)	-0.0296* (0.0159)	-0.00571 (0.0136)	-0.00577 (0.0133)	-0.0458* (0.0278)	-0.00911 (0.0215)	-0.0215 (0.0283)	-0.00302 (0.0193)
ad_fmage	0.000198 (0.00183)	0.000121 (0.000239)	-6.38e-05 (0.000587)	-0.000693 (0.000560)	0.000328 (0.00104)	-0.000868 (0.000735)	0.000371 (0.00105)	0.000529 (0.000944)
ad_meduc	-0.0173 (0.0127)	0.0249** (0.0110)	0.00973 (0.00714)	-0.00224 (0.00506)	0.0317* (0.0169)	-0.00201 (0.00750)	0.000648 (0.00736)	0.00213 (0.00817)
ad_mexper	-0.000791 (0.00186)	-5.26e-05 (0.000320)	-0.000161 (0.000731)	-0.000457 (0.000637)	-0.000571 (0.00118)	0.000634 (0.000804)	9.60e-05 (0.000920)	-0.00114 (0.000702)
ad_mfemale	0.208* (0.115)	-0.00264 (0.00679)	-0.0223* (0.0131)	0.0163 (0.0374)	-0.00738 (0.0386)	0.0341 (0.0335)	0.00581 (0.0338)	-0.0101 (0.0253)
ad_lemp	0.208*** (0.0497)	0.0651*** (0.0143)	0.00411 (0.00780)	-0.00352 (0.0125)	0.0972*** (0.0262)	0.0226 (0.0157)	-0.0125 (0.0113)	-0.00422 (0.0114)
Constant	0.715*** (0.0681)	0.390*** (0.0253)	0.454*** (0.0235)	0.189*** (0.0354)	0.934*** (0.0586)	0.922*** (0.0351)	0.956*** (0.0367)	0.951*** (0.0284)

Standard errors in parentheses

*** p<0.01, ** p<0.05, * p<0.1

Table S6.S continued

VARIABLES	(17) reput_4	(18) reput_5	(19) pcf_rep	(20) lvademp	(21) dlemp	(22) growth1	(23) growth3	(24) pcf_perf
supbuy	0.289 (0.610)	0.381 (0.633)	0.320 (0.789)	0 (0)	-0.477** (0.199)	-0.283 (0.542)	1.783 (2.384)	0 (0)
samesup	-0.0961 (0.141)	-0.0986 (0.160)	-0.00838 (0.152)	-1.389*** (0.399)	-0.219** (0.108)	-0.723** (0.316)	-0.506 (0.323)	-0.431** (0.174)
samecus	-0.104 (0.111)	0.115** (0.0481)	0.0546 (0.0868)	-0.944 (0.652)	0.101 (0.147)	-0.556*** (0.200)	0.356 (0.439)	0.00138 (0.218)
same_sec	-0.00138 (0.0186)	0.0274* (0.0164)	0.0165 (0.0188)	-0.142 (0.155)	-0.0572 (0.0403)	-0.0459 (0.0665)	-0.0631 (0.133)	-0.0760 (0.0872)
ad_fmage	-0.000701 (0.000817)	0.00153 (0.00157)	-0.00115 (0.000985)	-0.00429 (0.00791)	0.00112 (0.00218)	0.00889 (0.00643)	0.00487 (0.00738)	0.00611 (0.00457)
ad_meduc	-0.00271 (0.00692)	0.00521 (0.00983)	0.00401 (0.00894)	0.0171 (0.0516)	-0.0123 (0.0148)	-0.0552** (0.0231)	-0.0433 (0.0271)	0.00651 (0.0237)
ad_mexper	-0.000789 (0.000943)	-0.00120 (0.00143)	0.000521 (0.00171)	-0.00784 (0.00579)	0.000674 (0.00128)	0.00244 (0.00701)	-0.00454 (0.00586)	-0.00195 (0.00312)
ad_mfemale	0.0176 (0.0385)	0.0292 (0.0468)	0.0329 (0.0486)	0.411 (0.586)	0.00397 (0.0592)	-0.133 (0.132)	0.0827 (0.278)	-0.132 (0.0929)
ad_lemp	-0.0264*** (0.00871)	-0.0307** (0.0132)	-0.0117 (0.0137)	0.00968 (0.112)	0.0667*** (0.0258)	0.0957 (0.0717)	0.107 (0.114)	0.0619 (0.0600)
Constant	0.991*** (0.0237)	0.875*** (0.0448)	1.148*** (0.0443)	3.477*** (0.256)	0.644*** (0.0655)	1.297*** (0.225)	1.838*** (0.261)	0.924*** (0.163)

Standard errors in parentheses
 *** p<0.01, ** p<0.05, * p<0.1

Table S6.S continued

VARIABLES	(25) web	(26) email	(27) reput_D1	(28) reputD_2	(29) reputD_3	(30) reputD_4	(31) reputD_5	(32) pcf_repD
supbuy	0.0499 (0.314)	0.469 (0.354)	-0.442** (0.178)	-0.207 (0.323)	0.307 (0.262)	0.291 (0.341)	0.365 (0.366)	0.386 (0.657)
samesup	-0.0880 (0.0614)	-0.0882 (0.0620)	-0.0567 (0.0877)	-0.0331 (0.0810)	-0.0404 (0.0816)	-0.0517 (0.0740)	-0.0596 (0.0815)	-0.117 (0.139)
samecus	0.140*** (0.0377)	0.127*** (0.0289)	0.0385 (0.0361)	0.00420 (0.0453)	-0.0672 (0.0698)	-0.0862 (0.0654)	0.0799** (0.0382)	0.0964 (0.100)
same_sec	-0.0236 (0.0149)	-0.0634*** (0.0193)	-0.0124 (0.0140)	-0.0153 (0.0155)	0.00142 (0.0118)	-0.00298 (0.0114)	0.0197** (0.00984)	0.0153 (0.0231)
ad_fmage	-0.00227*** (0.000523)	-0.000573 (0.000930)	-0.000677 (0.000557)	0.000378 (0.000685)	0.000438 (0.000804)	-0.000250 (0.000627)	0.00109 (0.00115)	-0.000480 (0.00121)
ad_meduc	-0.0103* (0.00592)	0.0102 (0.0108)	-0.00442 (0.00292)	0.000750 (0.00431)	0.00197 (0.00559)	-0.000945 (0.00490)	0.00408 (0.00650)	-0.00183 (0.00938)
ad_mexper	0.000270 (0.00127)	-0.00149** (0.000584)	0.000405 (0.000603)	8.14e-05 (0.000562)	-0.000965 (0.000597)	-0.000811 (0.000681)	-0.000898 (0.00107)	-0.000524 (0.00188)
ad_mfemale	0.245*** (0.0523)	0.140*** (0.0431)	0.0316 (0.0245)	0.00488 (0.0202)	-0.00525 (0.0230)	0.0132 (0.0257)	0.0205 (0.0299)	0.0620 (0.0557)
ad_lemp	0.0827*** (0.0220)	0.0822*** (0.0230)	0.0126 (0.0101)	-0.00866 (0.00660)	-0.00437 (0.00849)	-0.0174*** (0.00583)	-0.0184** (0.00925)	-0.0172 (0.0155)
Constant	0.175*** (0.0331)	0.261*** (0.0361)	0.444*** (0.0241)	0.467*** (0.0224)	0.450*** (0.0230)	0.481*** (0.0185)	0.387*** (0.0337)	1.128*** (0.0481)

Standard errors in parentheses
 *** p<0.01, ** p<0.05, * p<0.1